

HASSAN VALLEY TOWNSHIP

Each township has six files containing six sections in each, and one file containing all 36 sections.

HassanValley01to06.pdf
HassanValley07to12.pdf
HassanValley13to18.pdf
HassanValley19to24.pdf
HassanValley25to30.pdf
HassanValley31to36.pdf
HassanValleyAll36.pdf

The points are listed starting with the point above the SE corner and continuing in a counter-clockwise rotation around the section. This normally begins with the East point, Northeast, then North, but may also include Witness Corners, and/or Meander Corners.

Definitions

Witness Corner: A witness corner “stands in” when the true corner cannot be monumented or occupied because of difficult terrain or obstruction of the corner sight. The witness corner must be on the section line and is usually 5 or 10 chains away from the true corner.

Meander Corner: The intersection of a township, range, or section line and the banks of a navigable stream or meandering body of water.

EAST QUARTER corner, Section 31, Township 116 North, Range 29 West

Certificate of Location of Government Corner

SKETCH OF REFERENCE TIES

(NO SCALE)



SECTION 31

Punch hole on top of
south end of CMP
138.29

fence

cast iron monument

center line of gravel road.

a

field line

34.50

Nail and disc

South face of power pole

Nail and bottle cap

West face of power pole

292.16

SECTION 32

Statement of evidence relative to this corner location on sheet 2

I hereby certify that this document
was prepared by me or under my
direct supervision.

Willard Pellinen

Willard Pellinen
McLeod County Surveyor
License No. 9626

Date Oct. 17, 1991

OFFICE OF THE COUNTY RECORDER
MCLEOD COUNTY, MINNESOTA.

I hereby certify that this document was filed in this
office at 1 o'clock P.M. on the 21st day
of Oct, 1991.

Carman Oetlie, County Recorder

By _____, Deputy

Document No. 241606

EAST QUARTER corner, Section 31, Township 116 North, Range 29 West

Certificate of Location of Government Corner

This corner was set by the government in 1855. A. H. Runyon "set quarter section post, drove charred stake, raised mound with trench as per instructions." He also planted apple seeds southeast of the mound.

1979. We measured the east line of Section 31 and set a temporary quarter corner in the center line of the north-south road in line with field lines east and west. Mr Clarence Rannow, 67 years old and had lived in the Southeast Quarter of Section 31 all his life, said this was the correct location of the quarter corner.

June 9, 1981. We dug for the corner, John Tupa from Hutchinson with a backhoe. Down 1 foot below the road surface we found a 12 inch diameter stone, 18 inches long. We tied the stone off and directly below the stone we found a wood stake, 3 inches in diameter, 1 foot long and sharpened at the bottom. We buried the stone north of the corner location.

July 2, 1981. We set a McLeod County cast iron monument at the corner and took additional reference ties.

July 23, 1990. We found the monument, top of monument broken off. We set a $\frac{1}{2}$ inch diameter iron pipe over the bottom part of the monument and took new reference ties. All old ties had been destroyed.

We accept the stone and wood stake we found as having perpetuated the correct location of the quarter corner.

NORTHEAST corner, Section 31, Township 116 North, Range 29 West

Certificate of Location of Government Corner

SKETCH OF REFERENCE TIES
(NO SCALE)

SECTION 30

SECTION 29

— field line —
Punch hole on top of each
end of 12 inch CMP, 18
feet long

23.57

25.44

Nail and bottle cap
West face of power pole
139.33

center line of cartway
cast iron monument

31.96
Nail and bottle cap
SW face of power pole

SECTION 31

SECTION 32

center line of gravel road

Statement of evidence relative to this corner location on sheet 2

I hereby certify that this document
was prepared by me or under my
direct supervision.

Willard Pellinen

Willard Pellinen
McLeod County Surveyor
License No. 9626

Date October 16, 1991

OFFICE OF THE COUNTY RECORDER
MCLEOD COUNTY, MINNESOTA.

I hereby certify that this document was filed in this
office at 1 o'clock P.M. on the 21st day
of Oct, 1991.

Armen Ostlie, County Recorder

By _____, Deputy

Document No. 241605

NORTHEAST corner, Section 31, Township 116 North, Range 29 West

Certificate of Location of Government Corner

1855. A.H.Runyon of the General Land Office set the corner. He set a charred stake, raised a mound of earth and dug pits and trench as per instructions. He planted apple seeds southeast of the mound.

1926. Old survey notes show an iron pin at the corner.

August 29, 1977. Mr. Clarence Rannow, 67 years old and has lived in the Southeast Quarter of Section 31 all his life, and Mr. Vernon Dressel, 56 years old who lives in the Northeast Quarter of Section 31 both stated that the center line intersection of the north-south township road and cartway running east is the corner.

February 7, 1980. Mr. Leonard Dolezal, 65 years old and had lived in the Southwest Quarter of Section 29 for 60 years also said the center line intersection is the corner.

1981. We found an iron pin at the corner and replaced it with a McLeod County cast iron monument and took reference ties.

July 23, 1990. We found the cast iron monument in good condition and took new reference ties.

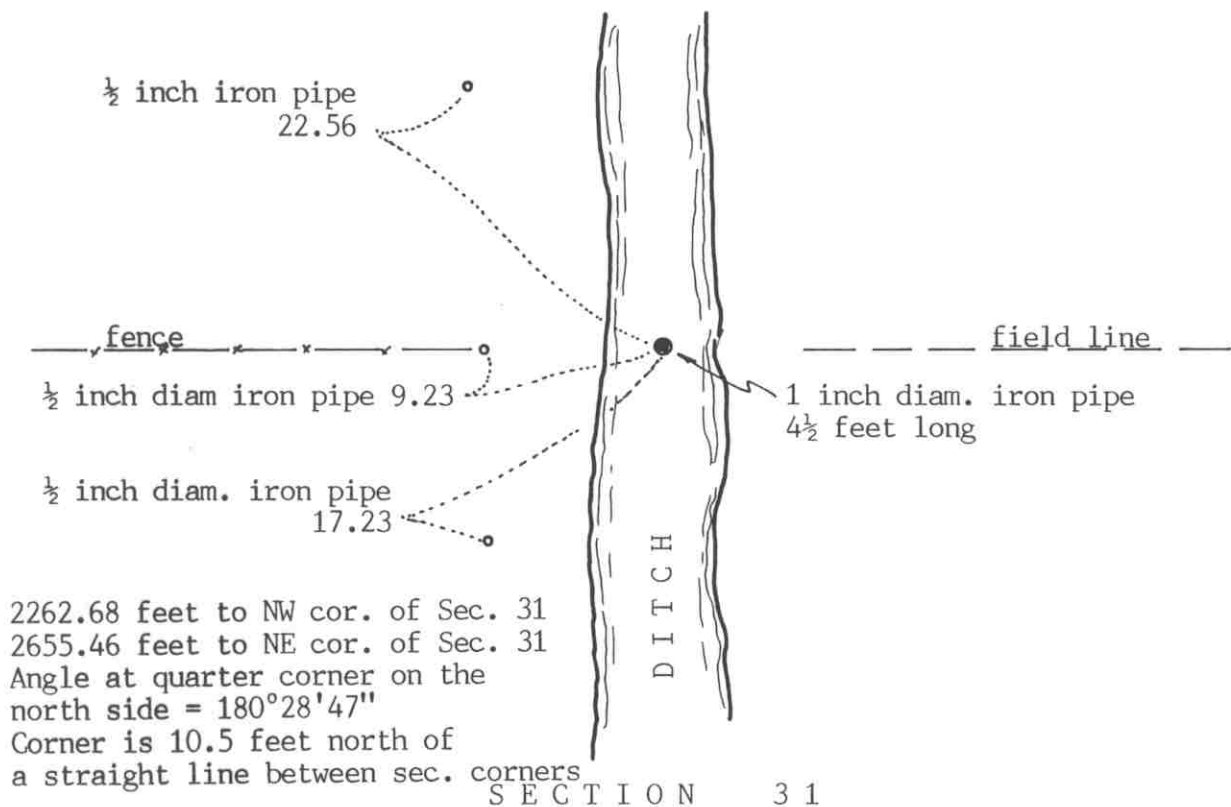
We believe the iron pin we found has perpetuated the correct location of the section corner.

NORTH QUARTER corner, Section 31, Township 116 North, Range 29 West

Certificate of Location of Government Corner

SKETCH OF REFERENCE TIES (NO SCALE)

SECTION 30



SECTION 31

Statement of evidence relative to this corner location on sheet 2

I hereby certify that this document was prepared by me or under my direct supervision.

Willard Pellinen

Willard Pellinen
McLeod County Surveyor
License No. 9626

Date October 15, 1991

OFFICE OF THE COUNTY RECORDER
MCLEOD COUNTY, MINNESOTA.

I hereby certify that this document was filed in this office at 1 o'clock P.M. on the 21st day of Oct, 1991.

Carmen Ostlie, County Recorder

By _____, Deputy

Document No. 241607

NORTH QUARTER corner, Section 31, Township 116 North, Range 29 West*Certificate of Location of Government Corner*

1855. A. H. Runyon of the General Land Office set a post in a marsh and 6 chains east he set a post, drove charred stake, built a mound for a witness corner.

February 7, 1980. Vernon Dressel, who lives in the North Half of the Northeast Quarter of Section 31 and Erwin Nemitz, 61 years old and who has lived in the Northwest Quarter of Section 31 all his life, both agree the ditch was built on the north south quarter lines of Sections 30 and 31 at the quarter corner and that the fence to the west is on the section line.

December 13, 1982. We set a 1 inch diameter iron pipe, $4\frac{1}{2}$ feet long on a proration of the government distances to the northwest and northeast corners of Section 31 in line with the fence to the west and a field line to the east. This corner falls in the center of the ditch.

July 23, 1990. We found the iron pipe and checked the reference ties.

We accept the iron pipe as the correct quarter corner location because it fits long standing occupation lines, the fence and ditch, as per the testimony of the land owners.

CERTIFICATE OF LOCATION OF GOVERNMENT CORNER

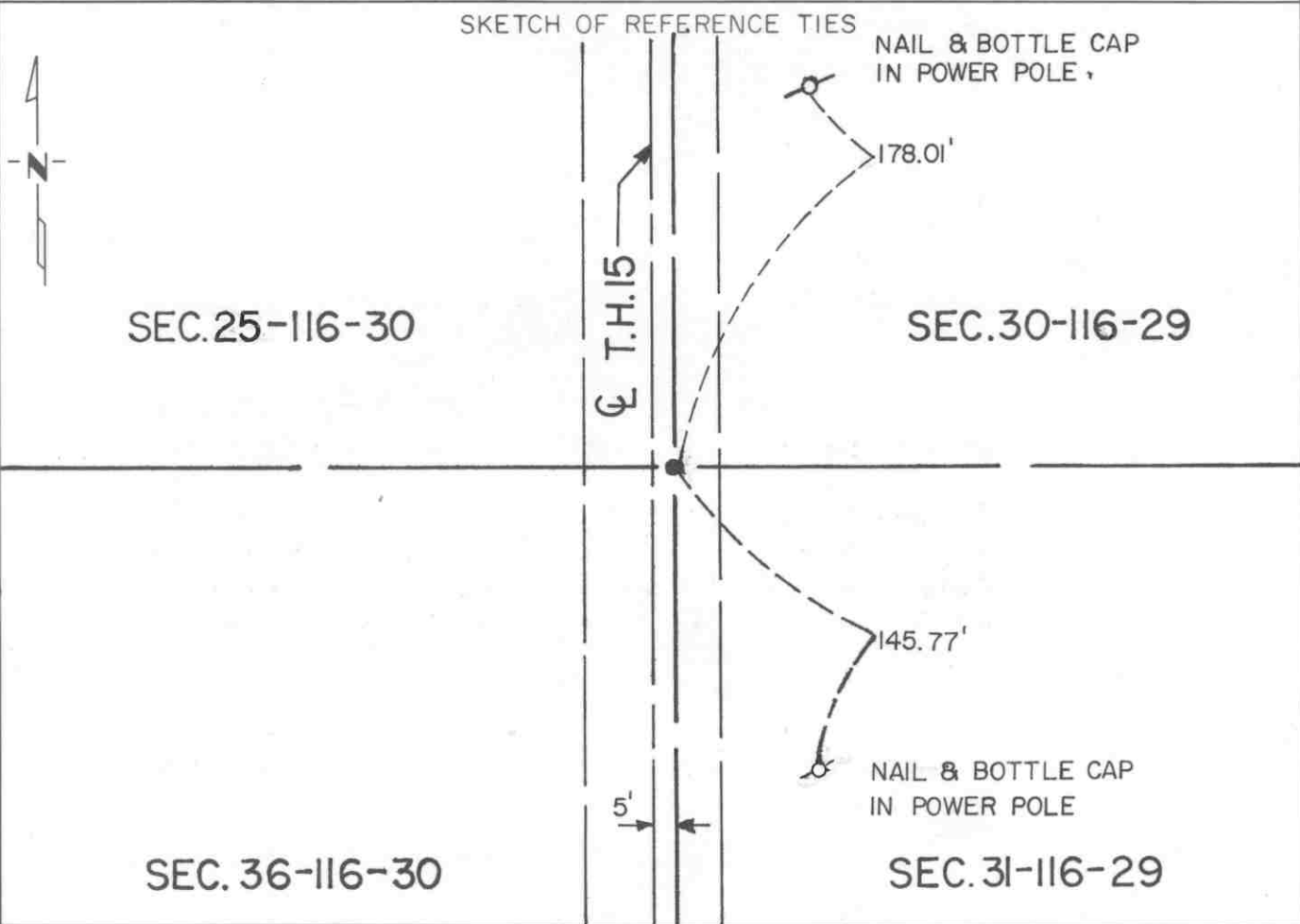
Northeast Corner of Section 36, Township 116 N, Range 30 W, 5th P.M.
 STATE OF MINNESOTA, County of McLeod

At the corner location shown on the sketch:

☒ On Apr. 16, 1990 found a railroad spike at the surface of T.H. 15
DATE

☒ left monument as found, ☐ lowered monument, ☐ removed monument (explain)

☐ On _____ placed a _____
DATE



Statement of evidence relative to this corner location is on back of page.

I hereby certify that this document and the data contained herein was prepared by me or under my direct supervision.

Robert J. Jones 8-20-91
SIGNATURE DATE

Registration No. 11864

☒ Land Surveyor, ☐ Professional Engineer

☐ County Surveyor, ☐ County Engineer

OFFICE OF THE COUNTY RECORDER

County of McLeod

I hereby certify that this document was filed in the Co. Recorders office at 2 P .M. on the 18th day of Sep A.D., 1991

County Recorder Carmen Ostlie

By _____, Deputy

DOCUMENT NO. 241069

Statement of Evidence:

Northeast Corner Section 36, T 116 N, R 30 W

- 1855 - The original Public Land Survey of the township line was completed by John Ryan. The corner fell in a large pond, so a witness corner was set 11.00 chains (726 feet) south of the section corner position. A wood post was set over a deposit of charcoal in a dirt mound to mark the witness corner. Trenches and pits were dug to build the mound. Osage orange was planted at the corners of the mound.
- 1941 - The Minnesota Highway Department right of way map shows the corner to be 5.0 feet east of T.H. 15 P.O.T. 1016+18.0. It was located at the centerline of a north/south road and in line with a fence to the west.
- 1942 - All evidence of the corner was probably destroyed when T.H. 15 was graded.
- 1969 - Dickman Knutson, McLeod County Surveyor, set a spike 5 feet east of P.O.T. 1016+18.0 to mark the corner. He also set reference ties.
- 1987 - Willard Pellinen, McLeod County Surveyor, set a railroad spike according to the 1969 reference ties. The corner had been destroyed by road construction.
- 1989 - Willard Pellinen recovered the railroad spike and the reference ties.
- 1990 - R. C. Jones, Registered Land Surveyor with Mn/DOT, found the railroad spike at the surface of the highway and recovered the reference ties.

The railroad spike is accepted as the corner location because it is found to be 5.78 feet east of T.H. 15 P.O.T. 1016+17.81, which substantially fits the right of way map position.

For additional information, contact the Mn/DOT Surveys Section at Willmar, Mn 56201.

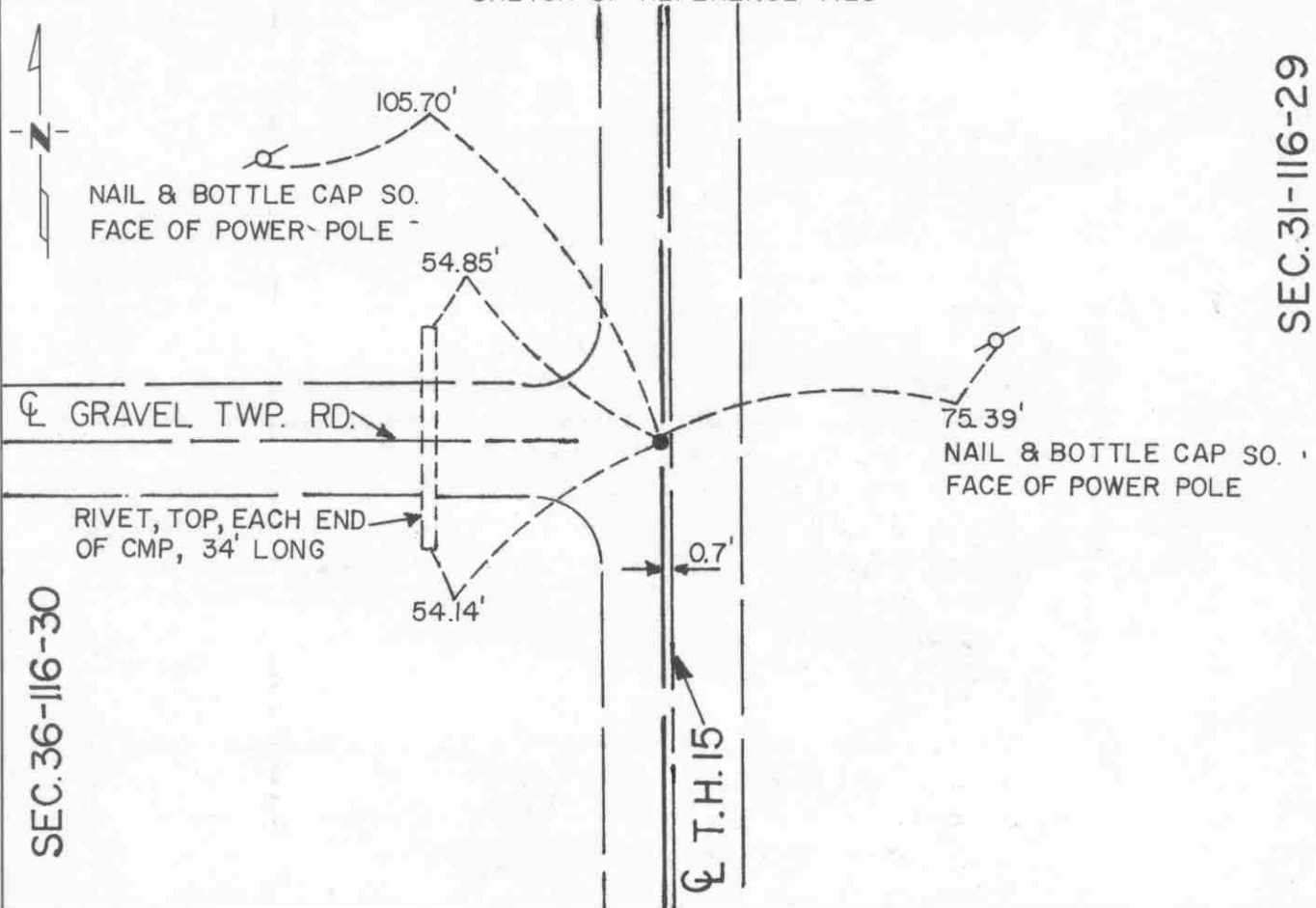
CERTIFICATE OF LOCATION OF GOVERNMENT CORNER

East Quarter Corner of Section 36, Township 116 N, Range 30 W, 5th P.M.
 STATE OF MINNESOTA, County of McLeod

At the corner location shown on the sketch:

- ☒ On Apr. 16, 1990 found a iron pipe at the road surface
DATE
- ☒ left monument as found, ☐ lowered monument, ☐ removed monument (explain)
- ☐ On _____ placed a _____
DATE

SKETCH OF REFERENCE TIES



Statement of evidence relative to this corner location is on back of page.

I hereby certify that this document and the data contained herein was prepared by me or under my direct supervision.

Robert C. Jones 8-20-91
SIGNATURE DATE

Registration No. 11864

- ☒ Land Surveyor, ☐ Professional Engineer
☐ County Surveyor, ☐ County Engineer

OFFICE OF THE COUNTY RECORDER

County of McLeod

I hereby certify that this document was filed in the Co. Recorders office at 2 P.M. on the 18th day of Aug A.D., 1991

County Recorder Carmen Ostlie

By _____, Deputy

DOCUMENT NO. 241070

Statement of Evidence:

East Quarter Corner Section 36, T 116 N, R 30 W

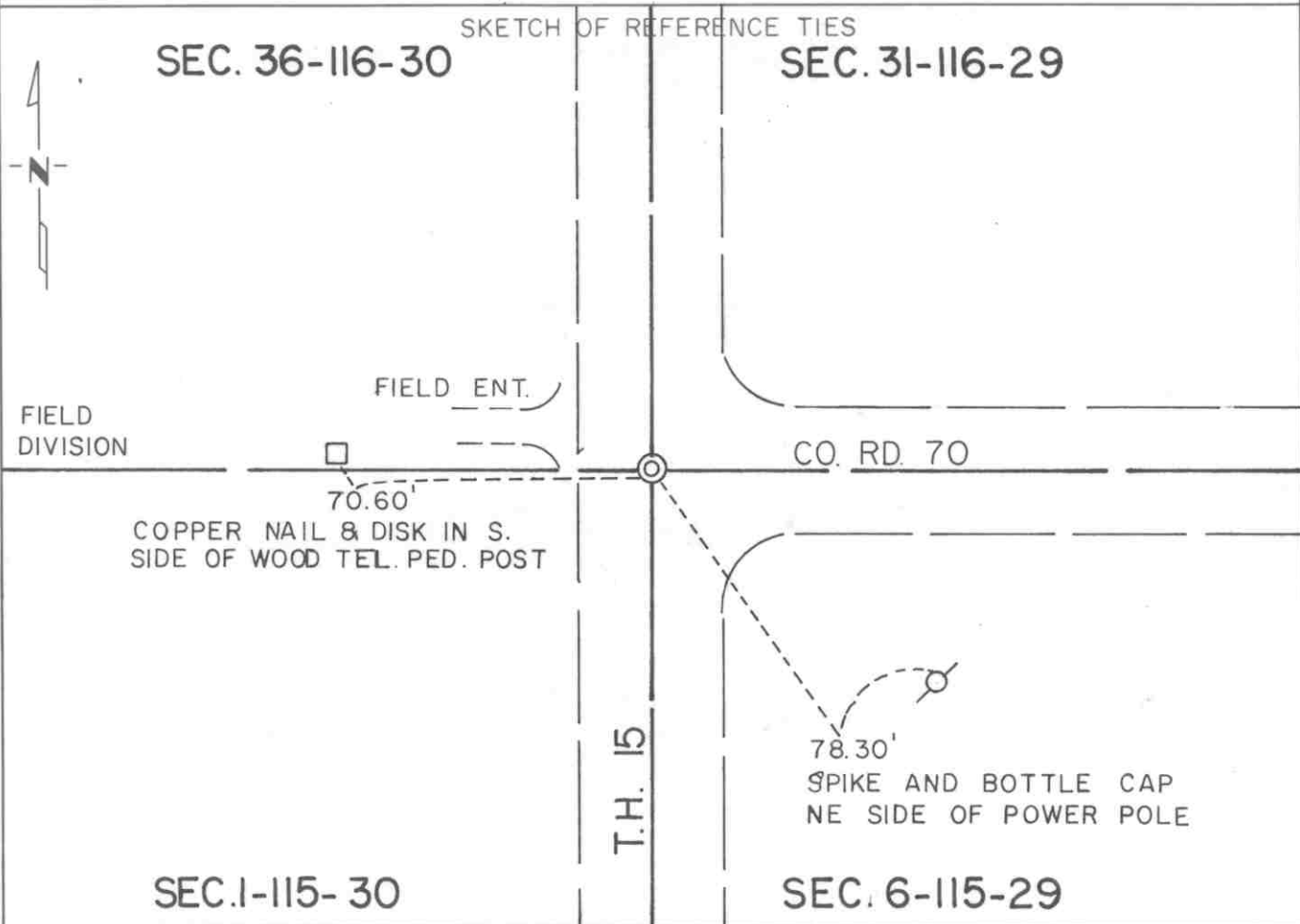
- 1855 - The original Public Land Survey of the township line was completed by John Ryan. A wood post was set over a deposit of charcoal in a dirt mound to mark the corner. Trenches and pits were dug to build the mound. Osage orange was planted at the corners of the mound.
- 1941 - The Minnesota Highway Department right of way map shows the corner to be 0.7 feet west of T.H. 15 P.O.T. 989+32.0. It was located at the centerline of a north/south road and on the centerline of a road to the west.
- 1942 - All evidence of the corner was probably destroyed when T.H. 15 was graded.
- 1969 - Dickman Knutson, McLeod County Surveyor, set an iron pipe 0.7 feet west of P.O.T. 989+32.0 to mark the corner. He also set reference ties.
- 1989 - Willard Pellinen, McLeod County Surveyor, set an iron pipe to mark the corner according to the 1969 reference ties. He set additional ties.
- 1990 - R. C. Jones, Registered Land Surveyor with Mn/DOT, found the iron pipe at the highway surface and recovered all the reference ties.

The iron pipe is accepted as the corner location because it was found to be 0.96 feet west of T.H. 15 P.O.T. 989+30.99, which substantially fits the position shown on the right of way map, and it is nearly on the centerline of a township road to the west.

For additional information, contact the Mn/DOT Surveys Section at Willmar, Mn 56201.

CERTIFICATE OF LOCATION OF GOVERNMENT CORNERNortheast Corner of Section 1, Township 115 N, Range 30 W, 5th P.M.STATE OF MINNESOTA, County of McLeod

At the corner location shown on the sketch:

☒ On Apr. 12, 1990 found a railroad spike at the surface of the highway
DATE☒ left monument as found, ☐ lowered monument, ☐ removed monument (explain)☐ On _____ placed a _____
DATE

Statement of evidence relative to this corner location is on back of page.

I hereby certify that this document and the data contained herein was prepared by me or under my direct supervision.

Robert Jones 8-19-91
SIGNATURE DATE

Registration No. 11864☒ Land Surveyor, ☐ Professional Engineer☐ County Surveyor, ☐ County Engineer

OFFICE OF THE COUNTY RECORDER

County of McLeodI hereby certify that this document was filed in the Co. Recorders office at 2 P.M. on the 18th day of sep A.D., 1991County Recorder Armen Bellie

By _____, Deputy

DOCUMENT NO. 241015

Statement of Evidence:

Northeast Corner Section 1, T 115 N, R 30 W

- 1855 - The original Public Land Survey of the Township Line was completed by John Ryan. A wood post was set in a dirt mound over a deposit of charcoal to mark the corner. Trenches and pits were dug as per instructions to build the mound. Osage orange was planted at the corners of the mound.
- 1895 - I. C. Christlieb, McLeod County Surveyor, set an iron monument to mark the corner.
- 1941 - The Minnesota Highway Department right of way map shows the corner to be located at T.H. 15 engineer's station P.O.T. 962+59.5. It was in line with the centerline of a road to the east and 2 1/2 feet south of a fence line to the west. It is not known whether a monument was found or not.
- 1942 - It appears that all physical evidence of the corner was destroyed when T.H. 15 was graded.
- 1969 - The McLeod County Surveyor measured the east line of Section 1 and found an iron pipe at the centerline of T.H. 15 and the centerline of a county road to the east. The distance from the pipe to the southeast corner of the section was within 1 foot of Christlieb's 1895 survey distance. Reference ties were made to the iron pipe at that time.
- 1990 - R. C. Jones, Registered Land Surveyor with Mn/DOT, found a railroad spike at the road surface at T.H. 15 engineer's station equation P.I. 962+61.00 = P.O.T. 962+58.68.

The railroad spike is accepted as the corner position because it nearly matches the location shown on the highway right of way map and it is in line with the centerline of a county highway to the east.

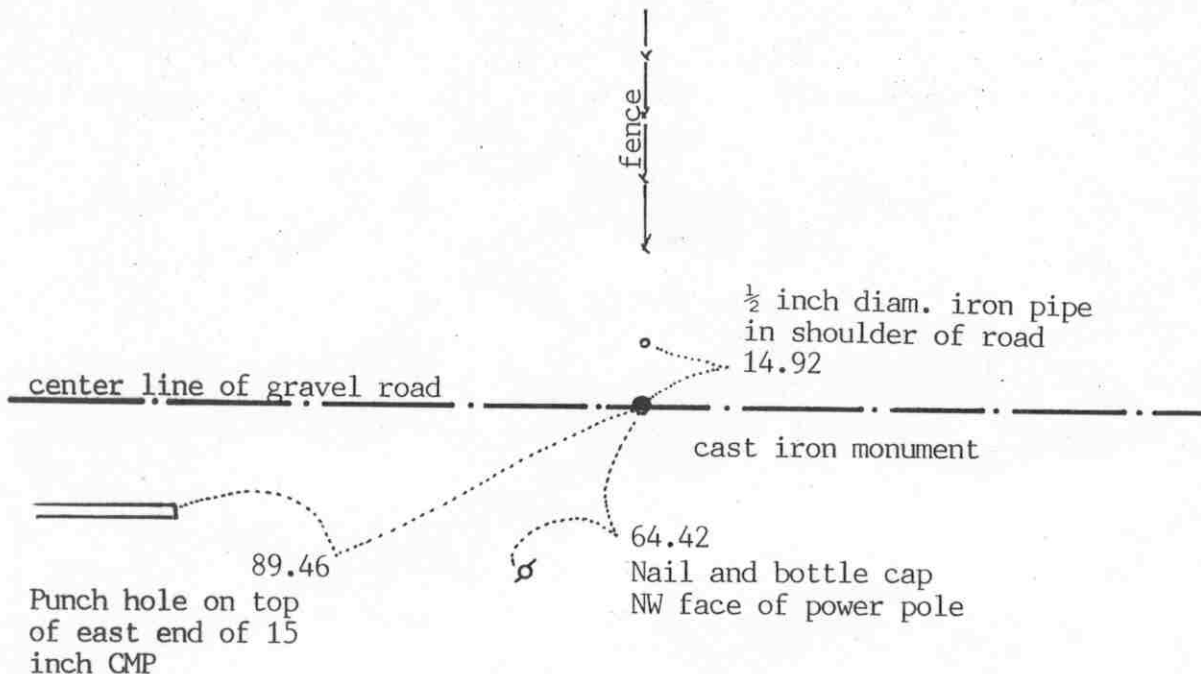
For additional information, contact the Mn/DOT Surveys Section at Willmar, Mn 56201.

NORTH QUARTER corner, Section 6, Township 115 North, Range 29 West

Certificate of Location of Government Corner

SKETCH OF REFERENCE TIES
(NO SCALE)

SECTION 31



SECTION 6

Statement of evidence relative to this corner location on sheet 2

I hereby certify that this document was prepared by me or under my direct supervision.

Willard Pellinen

Willard Pellinen
McLeod County Surveyor
License No. 9626

Date October 16, 1991

OFFICE OF THE COUNTY RECORDER
MCLEOD COUNTY, MINNESOTA.

I hereby certify that this document was filed in this office at 1 o'clock P. M. on the 21st day of Oct, 1991.

Carmen Ostlie, County Recorder

By _____, Deputy

Document No. 241593

Certificate of Location of Government Corner

July, 1855. John Ryan of the General Land Office set a post, deposited charcoal, dug pits and trench, built mound and planted osage orange seeds at the corners of the mound.

December, 1954. County Highway Department field notes show the corner to be on the center line of the east-west road in line with a fence to the north.

1970. McCombs Knutson Associates (Dickman Knutson, county surveyor) dug for the corner, John Tupa from Hutchinson with a backhoe. They dug a hole 10 feet by 5 feet by 4½ feet deep but found no evidence of the quarter corner.

Knutson set a McLeod County cast iron monument in the center of the road in line with a fence to the north as per testimony from area residents.

July 23, 1990. We found the monument in good condition and took new reference ties.

There being no evidence to the contrary, we accept the monument as marking the quarter corner. It fits long standing occupation lines, the center line of the road and the fence running north.

CERTIFICATE OF LOCATION OF GOVERNMENT CORNER

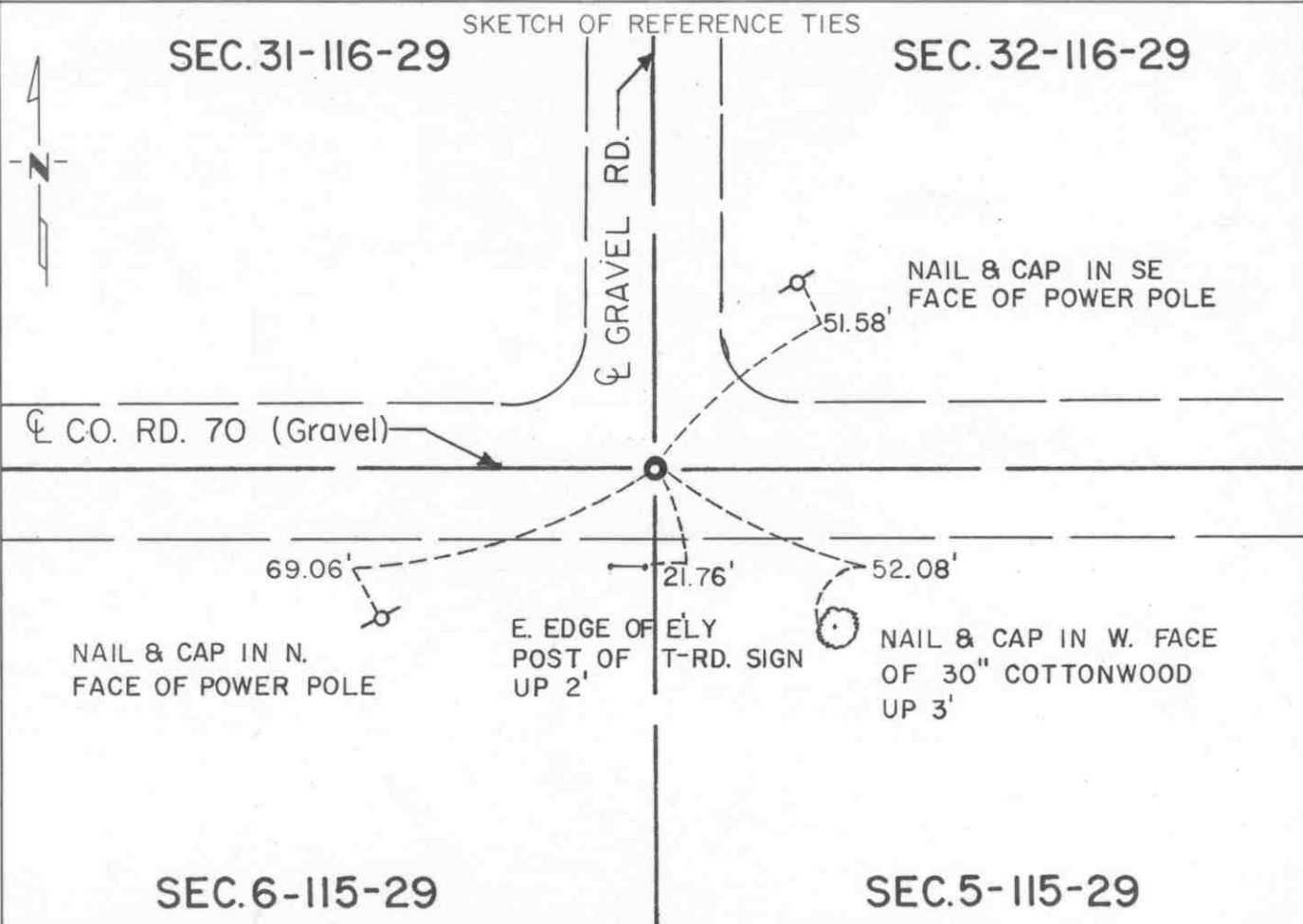
Northeast Corner of Section 6, Township 115 N, Range 29 W, 5th P.M.
STATE OF MINNESOTA, County of McLeod

At the corner location shown on the sketch:

☒ On April 12, 1990 found a cast iron monument about 6" below road surface
DATE

☒ left monument as found, ☐ lowered monument, ☐ removed monument (explain)

☐ On _____ placed a _____
DATE



Statement of evidence relative to this corner location is on back of page.

I hereby certify that this document and the data contained herein was prepared by me or under my direct supervision.

Robert C. Jones 8-19-91
SIGNATURE DATE

Registration No. 11864

☒ Land Surveyor, ☐ Professional Engineer

☐ County Surveyor, ☐ County Engineer

OFFICE OF THE COUNTY RECORDER

County of McLeod

I hereby certify that this document was filed in the Co. Recorders office at 2 P. .M. on the 18th day of Sept A.D., 1991

County Recorder Armen Dettie

By _____, Deputy

DOCUMENT NO. 240997

Statement of Evidence:

Northeast Corner Section 6, T 115 N, R 29 W

- 1855 - The original Public Land Survey of the Township Line was completed by John Ryan. A wood post was set over a deposit of charcoal in a dirt mound to mark the corner. Trenches and pits were dug to construct the mound and osage orange was planted at the corners of the mound.
- 1970 - Dickman Knutson, McLeod County Surveyor, found a stone and wood stake 3 1/2 feet below the road surface. The position of the stake and stone agreed with a 1923 survey distance to the east. A McLeod County cast iron monument was set over the stone and stake at the centerline of a road to the north and the centerline of an east/west road.
- 1989 - Willard Pellinen, McLeod County Surveyor, recovered the cast iron monument and set additional reference ties.
- 1990 - R. C. Jones, Registered Land Surveyor with Mn/DOT, found the cast iron monument about 6" below the road surface. All the 1989 reference ties were recovered.

The cast iron monument is accepted as the corner location because it perpetuates much older monumentation, fits an old survey distance, and fits long standing occupation lines.

For addition information, contact the Mn/DOT Surveys Section at Willmar, Mn 56201.

EAST QUARTER corner, Section 32, Township 116 North, Range 29 West

Certificate of Location of Government Corner



SKETCH OF REFERENCE TIES

(NO SCALE)

SECTION 32

SECTION 33

Nail and bottle cap
East face of power pole
139.25

cast iron monument

Punch hole on top of
north end of 12 inch CMP
76.98

center line of bituminous road

37.52

Punch hole on top of
each end of 15 inch
CMP 28 feet long

37.00

Statement of evidence relative to this corner location on sheet 2

I hereby certify that this document
was prepared by me or under my
direct supervision.

Willard Pellinen

Willard Pellinen
McLeod County Surveyor
License No. 9626

Date October 12, 1991

OFFICE OF THE COUNTY RECORDER
MCLEOD COUNTY, MINNESOTA.

I hereby certify that this document was filed in this
office at 1 o'clock P.M. on the 21st day
of Oct, 1991.

Carmen Ostlie County Recorder

By _____, Deputy

Document No. 241609

EAST QUARTER corner, Section 32, Township 116 North, Range 29 West

Certificate of Location of Government Corner

1855. A.H.Runyon of the General Land Office "set post, drove charred stake, raised mound with trench as per instructions." He also planted apple seeds at the south-east side of the mound.

March 23, 1979. We measured the east line of Section 32 and set a temporary quarter corner on the center line of the north-south road in line with the center line of a field road to the east.

February 19, 1980. Lawrence Schwarze, 65 years old and has lived in the Northwest Quarter of Section 33 for 36 years stated the center line of the field road to the east was put where the old fence used to be and the center line intersection should be the quarter corner.

September 27, 1984. We set a McLeod County cast iron monument on the center line of the north-south road in line with the center line of the field road to the east.

July 16, 1990. We found the cast iron monument in good condition and checked the reference ties.

Certificate of Location of Government Corner

SKETCH OF REFERENCE TIES
(NO SCALE)

SECTION 29

SECTION 28

 $\frac{1}{2}$ inch diam. iron pipe in
shoulder of road. 14.1714.48 to $\frac{1}{2}$ inch diam. iron
pipe in shoulder of road
_____ field line

cast iron monument

Punch hole on top of north end
of 15 inch CMP 150.45

SECTION 32

SECTION 33

center line of bituminous road

Statement of evidence relative to this corner location on sheet 2

I hereby certify that this document
was prepared by me or under my
direct supervision.

Willard Pellinen

Willard Pellinen
McLeod County Surveyor
License No. 9626

Date Oct. 12, 1991OFFICE OF THE COUNTY RECORDER
MCLEOD COUNTY, MINNESOTA.

I hereby certify that this document was filed in this
office at 1 o'clock P.M. on the 21st day
of Oct, 1991.

Armen Ohtlie, County Recorder

By _____, Deputy

Document No. 241608

NORTHEAST corner, Section 32, Township 116 North, Range 29 West

Certificate of Location of Government Corner

1855, A. H. Runyon of the General Land Office "set corner, drove charred stake, built mound with trench as per instructions." He planted apple seeds at the southeast side of the mound.

1968. McCombs Knutson Associated (Dickman Knutson, county surveyor) dug for the corner but found nothing.

July 10, 1968. Knutson set a $\frac{1}{2}$ inch diameter iron pipe on the center line of the north-south road in line with an old fence to the east.

July 31, 1974. Knutson replaced the iron pipe with a McLeod County cast iron monument and took reference ties. Adjoining property owners agree this is the correct location of the section corner.

December 4, 1987. We found no reference ties remaining. We found the cast iron monument down 6 inches below the road surface and took new ties.

July 16, 1990. We found the monument in good condition and checked the reference ties.

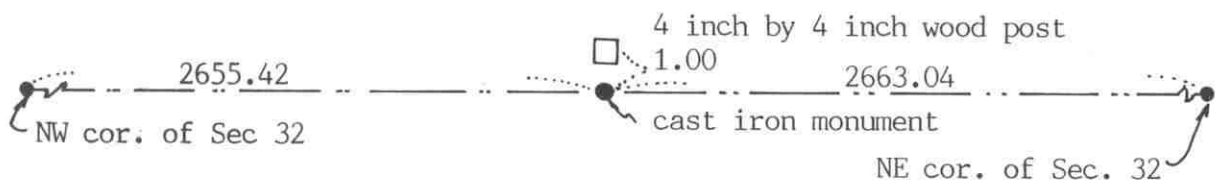
We accept the monument set by Knutson as marking the correct location of the section corner. It fits occupation lines, the center line of the road and a field line to the east.

NORTH QUARTER corner, Section 32, Township 116 North, Range 29 West

Certificate of Location of Government Corner

SKETCH OF REFERENCE TIES (NO SCALE)

SECTION 29

Angle at the quarter corner on north side is $178^{\circ}09'56''$

Quarter corner is 42.58 feet south of a straight line between section corners.

Corner is at the intersection of field lines north, south and west

SECTION 32

Statement of evidence relative to this corner location on sheet 2

I hereby certify that this document
was prepared by me or under my
direct supervision.

Willard Pellinen

Willard Pellinen
McLeod County Surveyor
License No. 9626

Date OCT. 19, 1991

OFFICE OF THE COUNTY RECORDER MCLEOD COUNTY, MINNESOTA.

I hereby certify that this document was filed in this
office at 2 o'clock P.M. on the 23rd day
of Oct, 1991.

Carmen Ottilie, County Recorder

By _____, Deputy

Document No. 241665

NORTH QUARTER corner, Section 32, Township 116 North, Range 29 West

Certificate of Location of Government Corner

This corner was originally set by the government in 1855. A. H. Runyon "set quarter section post, drove charred stake, raised mound with trench as per instructions." He also planted apple seeds at the southeast side of the mound.

February 2, 1980. We measured the north line of Section 32 and found a 4 inch by 4 inch wood post at the intersection of field lines north, south and west. Leonard Dolezal, 65 years old and has lived in the Southwest Quarter of Section 29 for 60 years, said this post is the quarter corner. It has been accepted as the corner by all adjoining land owners. The post is within 4 feet of being half way between the section corners but is about 43 feet south of a straight line.

September 15, 1980. We set a McLeod County cast iron monument in place of the wood post and reset the post 1 foot north of the monument.

July 23, 1990. We found the monument and the wood post ok.

We believe the wood post at the intersection of the field lines has perpetuated the correct location of the quarter corner.

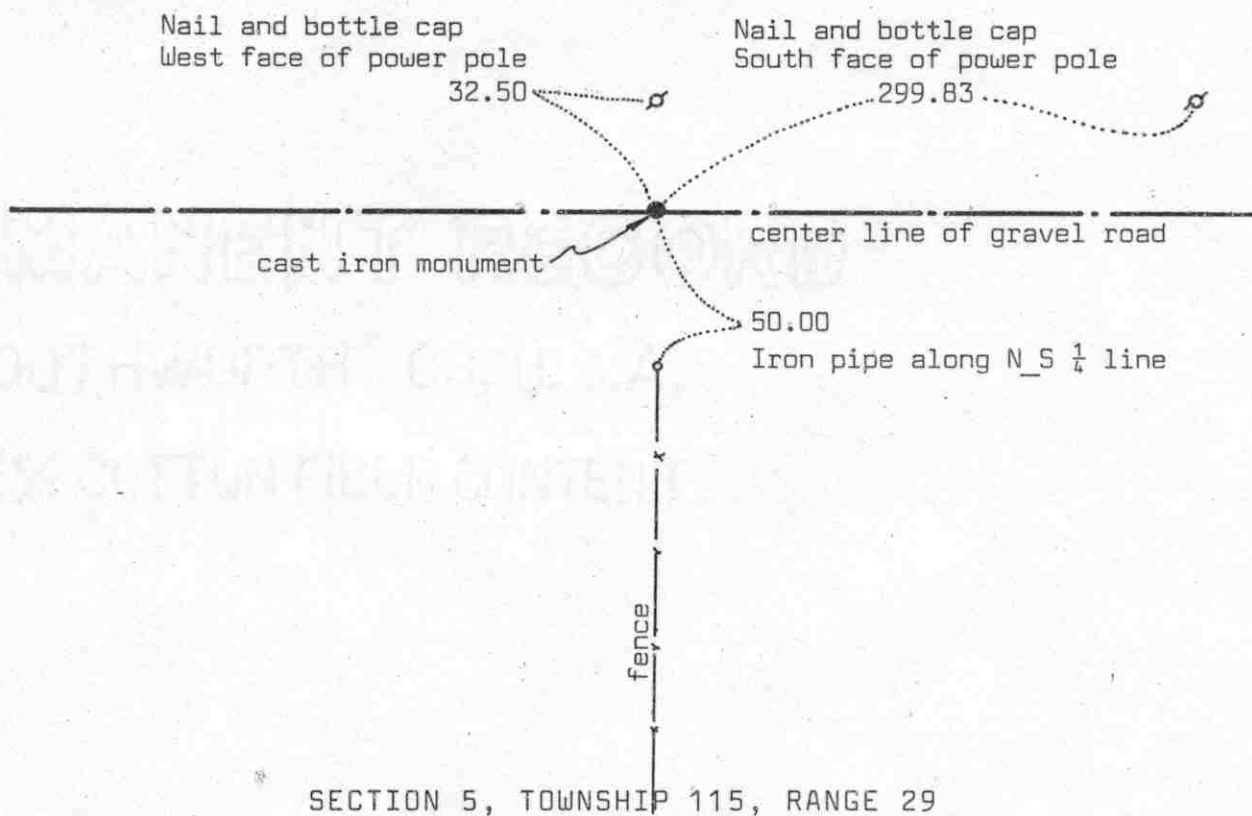
NORTH QUARTER corner, Section 5, Township 115 North, Range 29 West

Certificate of Location of Government Corner

SKETCH OF REFERENCE TIES

(NO SCALE)

SECTION 32, TOWNSHIP 116, RANGE 29



Statement of evidence relative to this corner location on sheet 2

I hereby certify that this document was prepared by me or under my direct supervision.

Willard Pellinen

Willard Pellinen
McLeod County Surveyor
License No. 9626

Date 4/3/90

OFFICE OF THE COUNTY RECORDER
MCLEOD COUNTY, MINNESOTA.

I hereby certify that this document was filed in this office at 4 o'clock P.M. on the 2nd day of May, 1990.

Carmen Ostlie, County Recorder

By _____, Deputy

Document No. 233086

NORTH QUARTER corner, Section 5, Township 115 North, Range 29 West

Certificate of Location of Government Corner

July, 1855. This corner was established by John Ryan of the General Land Office. He "set quarter section post, deposited charcoal, dug pits and trench, built mound and planted osage orange seeds at corners of mound."

December 11, 1923. County surveyor notes show an iron pipe at the corner and a distance of 2641.8 feet to the northwest corner of Section 5.

1970. R.A.Borchardt, 55 years old, in the southwest quarter of Section 32 all his life, said there is a stone with a wagon wheel over it at the corner. It was close to the center line of the road in line with a fence to the south.

1970. McCombs Knutson Associates, Dickman Knutson, county surveyor, dug for the corner, John Tupa from Hutchinson with a backhoe. They dug a hole 10 feet wide, 15 feet long and $4\frac{1}{2}$ feet deep but found nothing. They set a cast iron monument on the center line of the road in line with a fence running south as per testimony by Mr. Borchardt and by Mrs Rannow, in the Northwest Quarter of Section 5, who also said the old fence has been accepted as the north - south quarter line of Section 5.

March 21, 1989. We found the monument in good condition but all the reference ties destroyed. We took new reference ties.

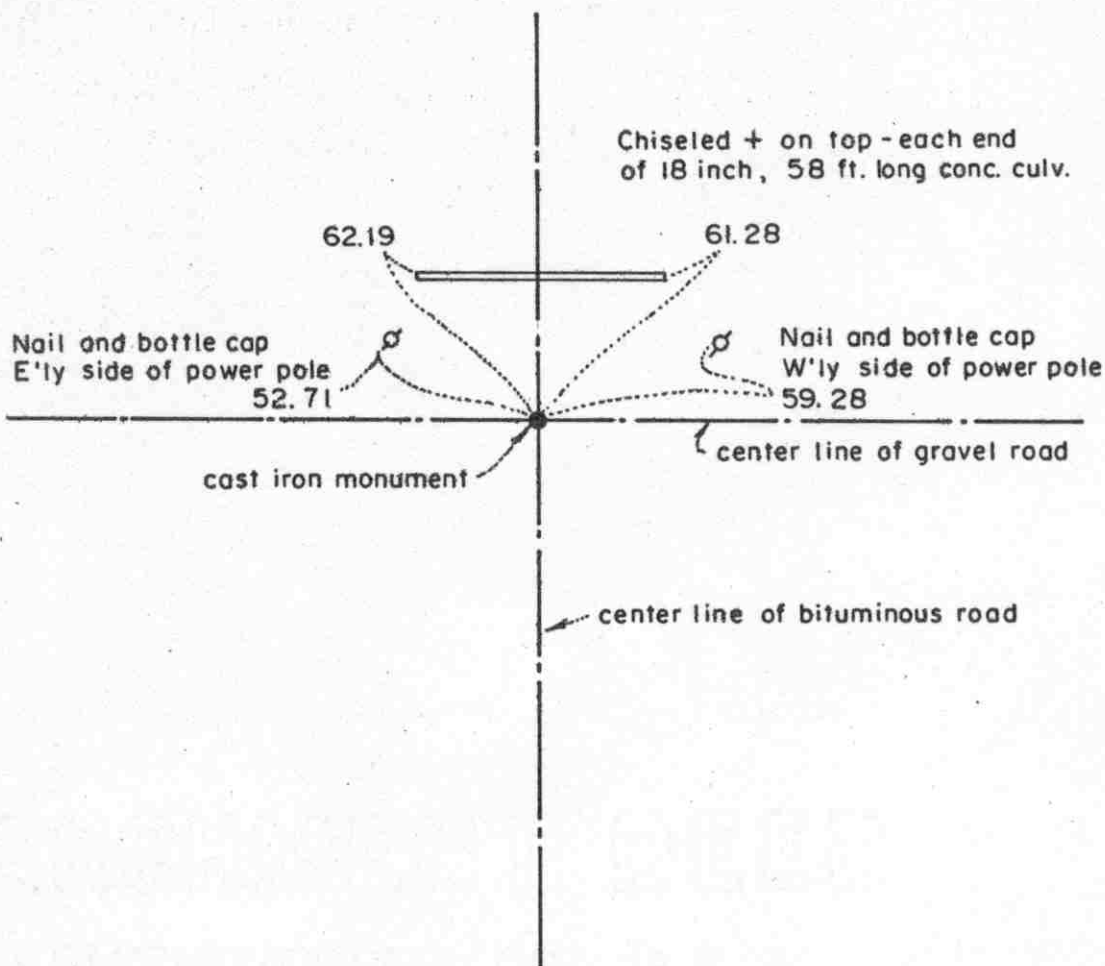
There being no evidence to the contrary, we have to accept the monument as marking the correct location of the quarter corner.

NORTHEAST corner, Section 5, Township 115 North, Range 29 West

Certificate of Location of Government Corner

SKETCH OF REFERENCE TIES

(NO SCALE)

Statement of evidence relative to this corner location on sheet 2

I hereby certify that this document
was prepared by me or under my
direct supervision.

Willard Pellinen

Willard Pellinen
McLeod County Surveyor
License No. 9626

Date 2/9/89

OFFICE OF THE COUNTY RECORDER
MCLEOD COUNTY, MINNESOTA.

I hereby certify that this document was filed in this
office at 9 o'clock A.M. on the 15th day
of Feb. 1989.

Carmen Peltie, County Recorder
By _____, Deputy

Document No. 226953

NORTHEAST corner, Section 5, Township 115 North, Range 29 West

Certificate of Location of Government Corner

This corner was established in July, 1855, by John Ryan of the Government Land Office. His notes state he set post, deposited charcoal, dug pits and trench and planted osage orange seeds at the corners of the mound.

In 1899, E.L.Higgins found a stake at this corner.

In August, 1970 we talked with R.A.Borchardt who had lived in the Southwest Quarter of Section 32, 116, 29 for over 60 years. He stated the center line center line intersection of the roads is the section corner.

On May 6, 1970, we found an iron pin down $1\frac{1}{2}$ feet below the road surface. Not known who set this pin.

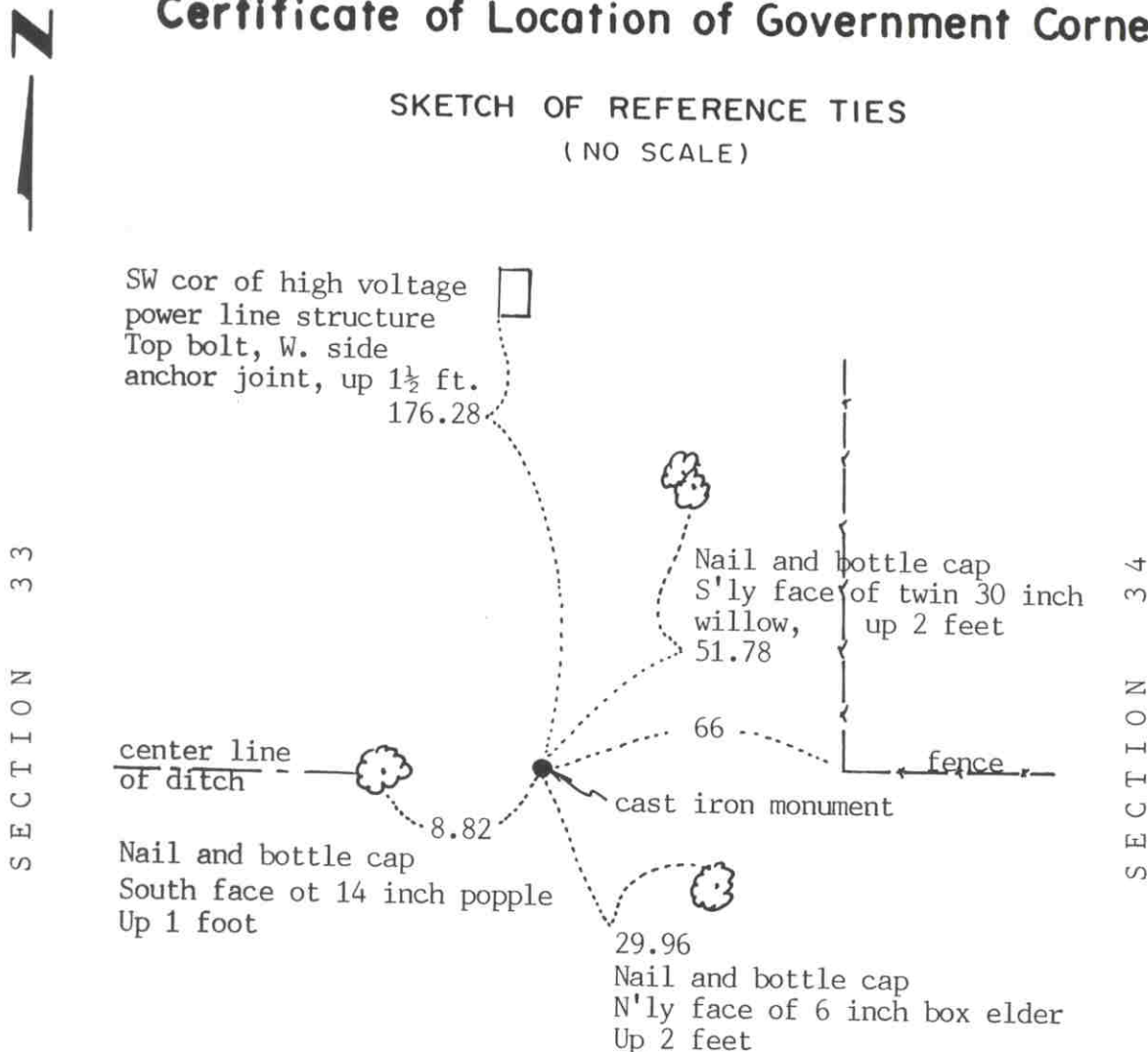
In August, 1970, we set a McLeod County cast iron monument at the center line- center line intersection at the location of the iron pin.

On April 14, 1988, we found the cast iron monument down 4 inches below the bituminous surface, in good condition. We took new reference ties.

We feel the found iron pin and the center line of the roads has perpetuated the true location of the section corner.

Certificate of Location of Government Corner

SKETCH OF REFERENCE TIES (NO SCALE)



Statement of evidence relative to this corner location on sheet 2

I hereby certify that this document was prepared by me or under my direct supervision.

Willard Pellinen

Willard Pellinen
McLeod County Surveyor
License No. 9626

Date Oct. 16, 1991

OFFICE OF THE COUNTY RECORDER
MCLEOD COUNTY, MINNESOTA.

I hereby certify that this document was filed in this office at 1 o'clock P. M. on the 21st day of Oct, 1991.

Armen Ostlie, County Recorder

By _____, Deputy

Document No. 241611

EAST QUARTER corner, Section 33, Township 116 North, Range 29 West

Certificate of Location of Government Corner

This corner was originally set by the government in 1855. A. H. Runyon "set quarter section post, drove charred stake, raised mound with trench as per instructions." He also planted apple seeds on the southeast side of the mound.

August 19, 1977. George Portele, 68 years old and lives in the Northeast Quarter of Section 33, said fence running east and center line of ditch running west are on the quarter lines of Sections 33 and 34 and fence running north is the east line of the west 4 rods of the Southwest Quarter of the Northwest Quarter of Section 34.

February, 1980. Mr. Raymond Otto, 62 years old and has lived in the Southwest Quarter of Section 34 for 32 years agrees with Mr. Portele.

February 13, 1980. We set a $\frac{1}{2}$ inch diameter iron pipe 66 feet west of the fence running north and in line with the fence to the east and the center line of the ditch running west. We took available reference ties.

April 29, 1981. We set a McLeod County cast iron monument with a $\frac{1}{2}$ inch diameter iron pipe over it and took additional ties.

July 23, 1990. We found the iron pipe and took new reference ties.

The fence lines and the ditch have perpetuated the location of the quarter corner as per testimony by the 2 area residents.

NORTHEAST corner, Section 33, Township 116 North, Range 29 West

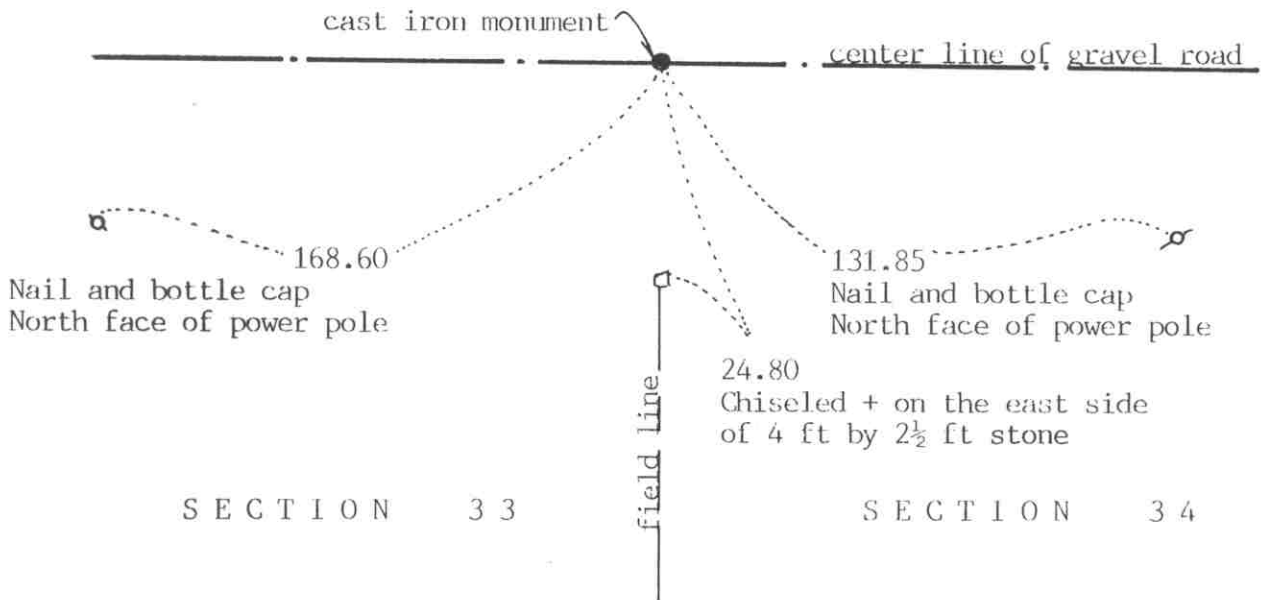
Certificate of Location of Government Corner

SKETCH OF REFERENCE TIES
(NO SCALE)



SECTION 28

SECTION 27



Statement of evidence relative to this corner location on sheet 2

I hereby certify that this document was prepared by me or under my direct supervision.

Willard Pellinen
Willard Pellinen
McLeod County Surveyor
License No. 9626

Date October 13, 1991

OFFICE OF THE COUNTY RECORDER
MCLEOD COUNTY, MINNESOTA.

I hereby certify that this document was filed in this office at 1 o'clock P.M. on the 21st day of Oct, 1991.

Carmen Ostlie County Recorder

By _____, Deputy

Document No. 241610

NORTHEAST corner, Section 33, Township 116 North, Range 29 West

Certificate of Location of Government Corner

1855. A. H. Runyon of the General Land Office "drove charred stake, raised mound with trench as per instructions." He also planted apple seeds at the south-east side of the mound.

July 10, 1968. McCombs Knutson Associates (Dickman Knutson, county surveyor) set a 2 inch diameter iron pipe on the center line of the east west road in line with a field line south. Area residents stated this is the correct location of the section corner.

Knutson replaced the iron pipe with a McLeod County cast iron monument and took reference ties.

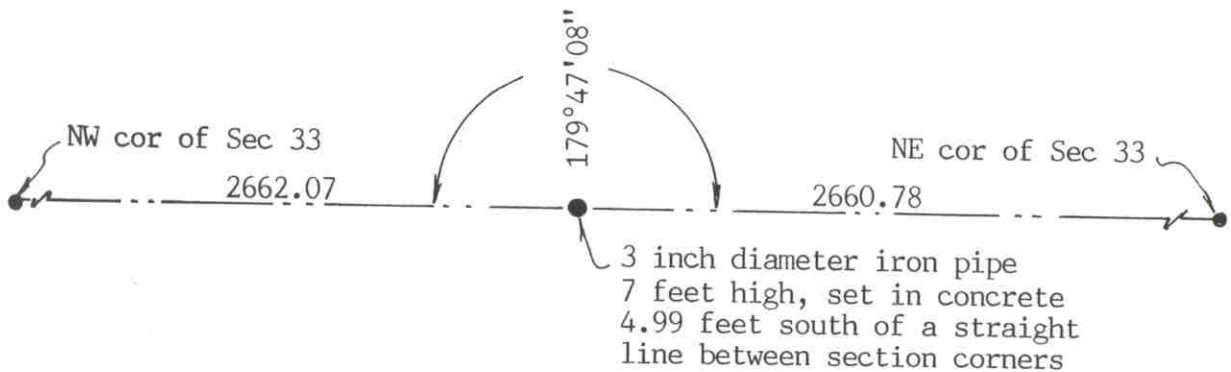
July 16, 1990. We found the cast iron monument in good condition and checked the reference ties.

NORTH QUARTER corner, Section 33, Township 116 North, Range 29 West

Certificate of Location of Government Corner

SKETCH OF REFERENCE TIES
(NO SCALE)

SECTION 28



SECTION 33

Statement of evidence relative to this corner location on sheet 2

I hereby certify that this document
was prepared by me or under my
direct supervision.

Willard Pellinen

Willard Pellinen
McLeod County Surveyor
License No. 9626

Date October 14, 1991

OFFICE OF THE COUNTY RECORDER
MCLEOD COUNTY, MINNESOTA.

I hereby certify that this document was filed in this
office at 1 o'clock P. M. on the 21st day
of Oct, 19 91.

(Armen Ostlie), County Recorder

By _____, Deputy

Document No. 241612

NORTH QUARTER corner, Section 33, Township 116 North, Range 29 West*Certificate of Location of Government Corner*

1855. A.H.Runyon of the General Land Office "set post, drove charred stake, raised mound with trench as per instructions." He also planted apple seeds at the south-east side of the mound.

July 10, 1968. McCombs Knutson Associates (Dickman Knutson, county surveyor) found a 3 inch diameter iron pipe, 7 feet high and set in concrete at the intersection of field lines east and west and a fence running north. Mr. Lowell Wright, who owns the Southwest Quarter of Section 28, said this post is the quarter corner and has been accepted by the adjoining land owners as such.

July 16, 1990. We found the iron pipe still in place. The nearest reference ties are to the northeast and northwest corners of Section 33.

We accept the iron pipe as marking the quarter corner. It is only 0.65 feet of being on a split between the section corners and within 5 feet of being on a straight line between the section corners.

NORTH QUARTER corner, Section 4, Township 115 North, Range 29 West

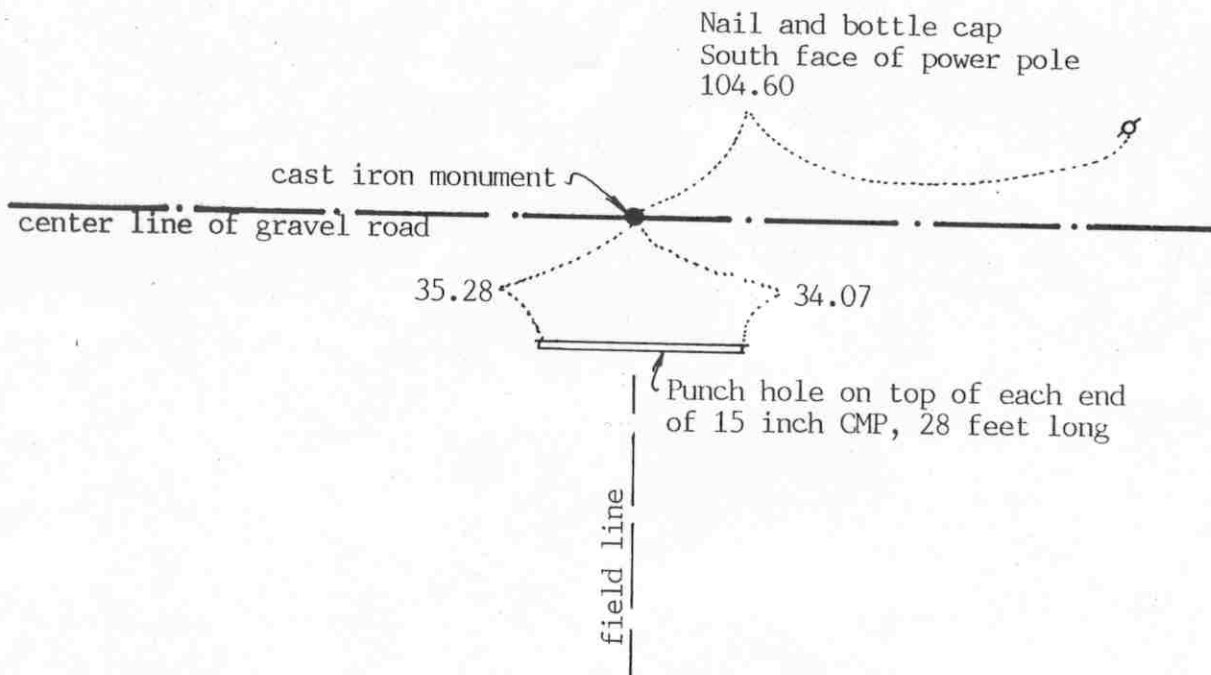
Certificate of Location of Government Corner



SKETCH OF REFERENCE TIES

(NO SCALE)

SECTION 33



SECTION 4

Statement of evidence relative to this corner location on sheet 2

I hereby certify that this document was prepared by me or under my direct supervision.

Willard Pellinen

Willard Pellinen
McLeod County Surveyor
License No. 9626

Date Oct. 13, 1991

OFFICE OF THE COUNTY RECORDER
MCLEOD COUNTY, MINNESOTA.

I hereby certify that this document was filed in this office at 1 o'clock P.M. on the 21st day of Oct, 1991.

Carmen Ostlie, County Recorder

By _____, Deputy

Document No. 241592

North Quarter corner, Section 4, Township 115 North, Range 29 West

Certificate of Location of Government Corner

This corner was originally established by the government in 1855. John Ryan set a post, deposited charcoal, dug pits and trench, built mound and planted osage orange seeds at the corners of the mound.

November, 1899. E.L.Higgins, county surveyor, found an old stake at the corner. He measured 2638.5 feet to the northwest corner and 2653 feet to the northeast corner of Section 5.

September 8, 1969. McCombs Knutson Associates (Dickman Knutson, county surveyor) set a temporary quarter corner on center line of the east-west road in line with a tree line to the south.

Knutson excavated for the corner with a backhoe but found nothing.

October 26, 1970. Knutson set the quarter corner, a McLeod County cast iron monument, on the center line of the road on a proration of Higgins' 1899 distances to the northwest and the northeast corners of the section.

July 16, 1990. We found all the reference ties destroyed but found monument in good condition 3 inches below the surface of the road. We took new ties.

We measured 2641.34 feet to the northwest corner and 2655.85 feet to the northeast corner of the section.

We accept the monument set by Knutson as marking the correct location of the quarter corner. This is on a proration of the 1899 distances and is only 0.8 feet north of a straight line between the section corners.

NORTHEAST corner, Section 4, Township 115 North, Range 29 West

Certificate of Location of Government Corner

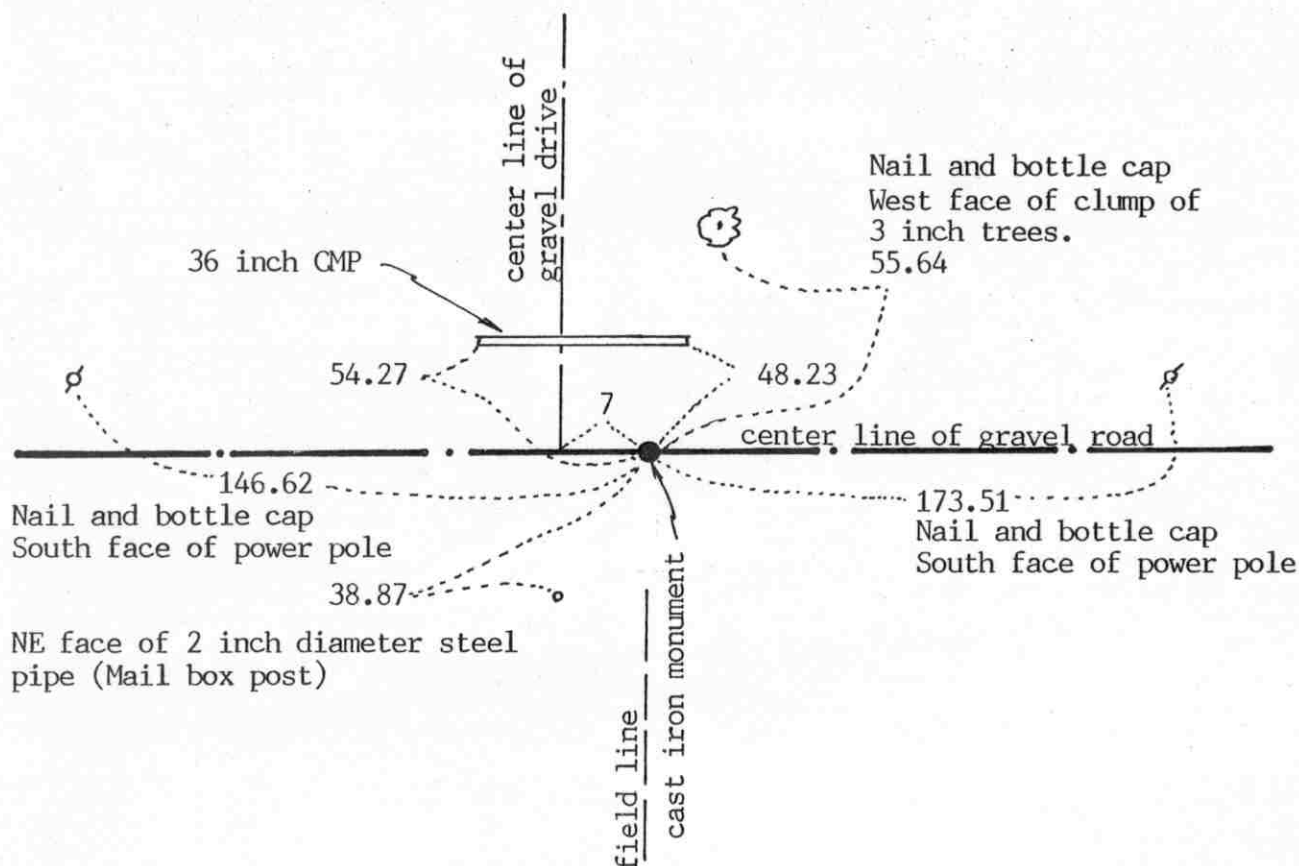
SKETCH OF REFERENCE TIES

(NO SCALE)

SECTION 33

SECTION 34

T. 116 R. 29



T. 115 R. 29

SECTION 4

SECTION 3

Statement of evidence relative to this corner location on sheet 2

I hereby certify that this document was prepared by me or under my direct supervision.

Willard Pellinen

Willard Pellinen
McLeod County Surveyor
License No. 9626

Date January 27, 1994.

OFFICE OF THE COUNTY RECORDER
MCLEOD COUNTY, MINNESOTA.

I hereby certify that this document was filed in this office at 9 o'clock A.M. on the 7th day of February, 1994.

Carmen Arthi Mulder, County Recorder

By Jan Lotrick, Deputy

Document No. 257717

NORTHEAST corner, Section 4, Township 115 North, Range 29 West

Certificate of Location of Government Corner

July, 1855. This corner was originally established by the General Land Office. John Ryan set a post, deposited charcoal, dug pits and trench, built mound and planted osage orange seeds at the corners of the mound.

November, 1899. E. L. Higgins, county surveyor, had a distance of 2655.85 feet to the north quarter corner of Section 4 and 2647 feet to the north quarter corner of Section 3.

September 8, 1969. Mr. Raymond Otto, who owned the East Half of the Southeast Quarter of Section 33, testified that the driveway running north is all in Section 33.

April 16, 1970. Dickman Knutson, county surveyor, excavated for the corner, John Tupa from Hutchinson with a backhoe. They dug a hole 5 feet by 5 feet by 3 feet deep, to the east of the driveway running north. Down 3 feet they found a stone with a wood stake beside it. They took available reference ties.

Knutson set a McLeod County cast iron monument at the corner.

The monument set by Knutson is accepted as the quarter corner. It fits long standing occupation line, the center line of the east-west road and it perpetuates the location of an older monument, the stone. It also fits the location as per testimony by Mr. Otto. Our measured distances to the north quarter corner of Section 4 and to the north quarter corner of Section 3 are within a few feet of Higgins' distances.

December 21, 1993. We found the monument in good condition down 10 inches below the surface of the gravel road and took new reference ties.

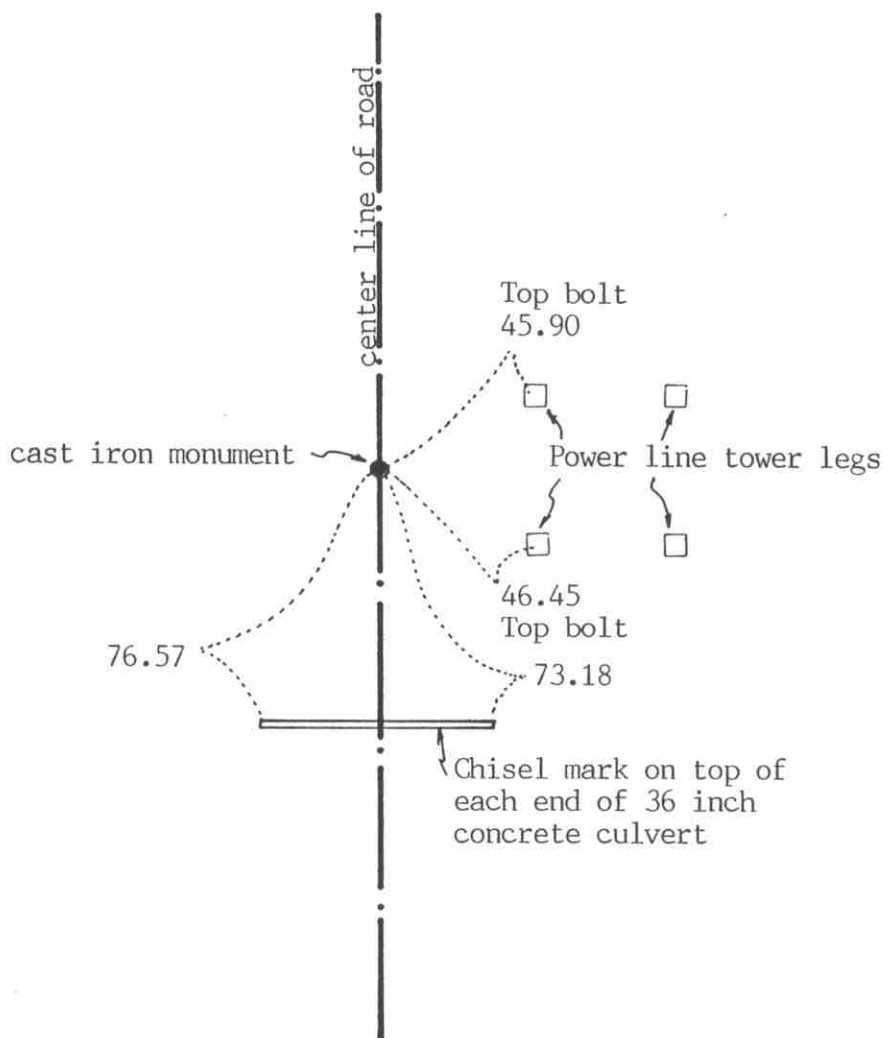
EAST QUARTER corner, Section 34, Township 116 North, Range 29 West

Certificate of Location of Government Corner

SKETCH OF REFERENCE TIES (NO SCALE)

SECTION 34

SECTION 35



Statement of evidence relative to this corner location on sheet 2

I hereby certify that this document was prepared by me or under my direct supervision.

Willard Pellinen

Willard Pellinen
McLeod County Surveyor
License No. 9626

Date October 12, 1991

OFFICE OF THE COUNTY RECORDER MCLEOD COUNTY, MINNESOTA.

I hereby certify that this document was filed in this office at 1 o'clock P.M. on the 21st day of Oct, 1991.

Armen Ostlie, County Recorder

By _____, Deputy

Document No. 241614

EAST QUARTER corner, Section 34, Township 116 North, Range 29 West

Certificate of Location of Government Corner

This corner was originally set by the government in 1855. A. H. Runyon "set quarter section post, drove charred stake, raised mound with trench as per instructions." He planted apple seeds at the southeast side of the mound.

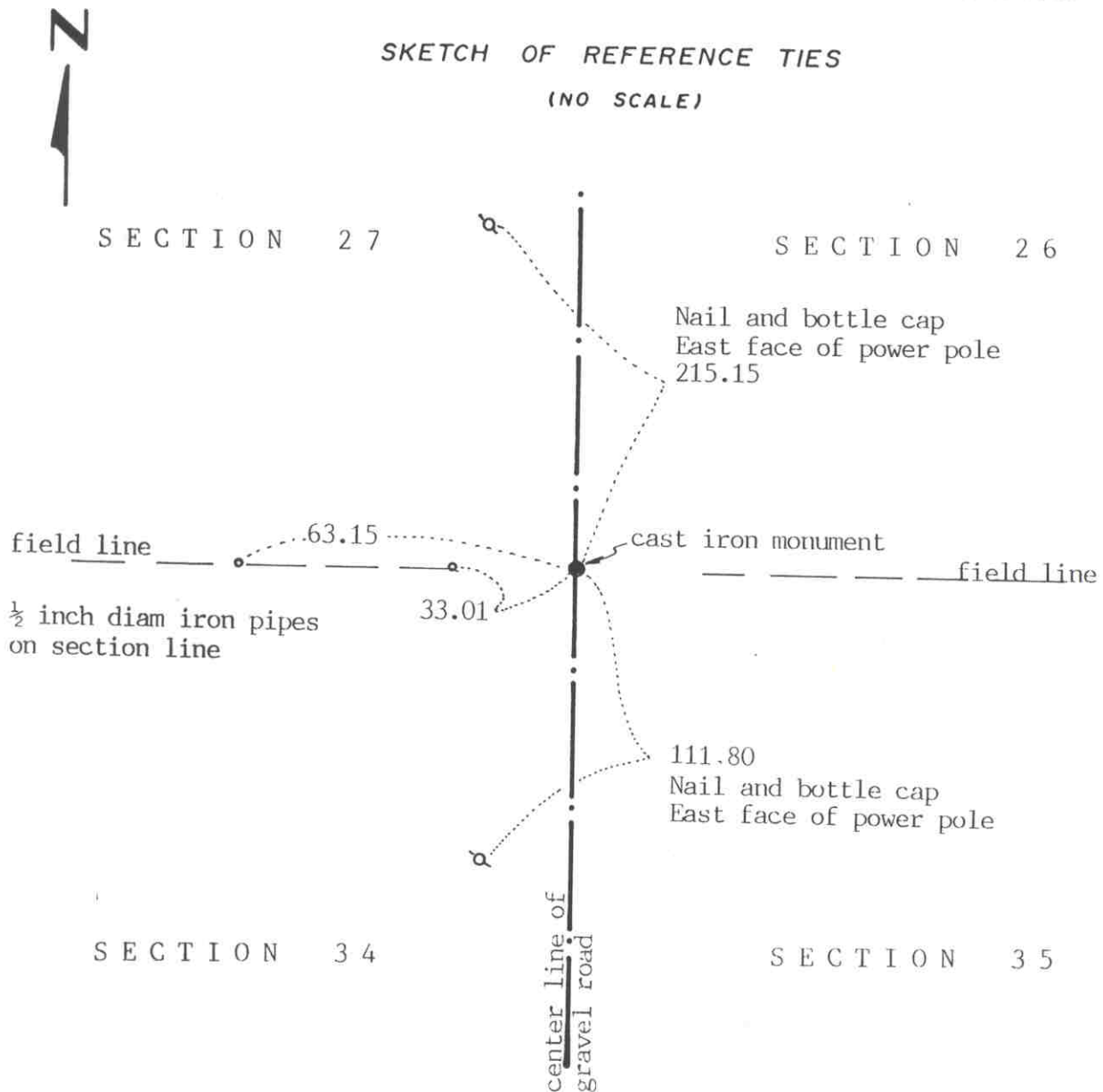
August, 1969. McCombs Knutson Associates (Dickman Knutson, county surveyor) found a re-rod down $1\frac{1}{2}$ feet below the road surface. Mr John Boushka and Mr. Charles Johnson, long time residents of the area both said this was the correct corner. Section 35 was surveyed about 35 years ago and all corners were found or set.

Knutson set a McLeod County cast iron monument at the corner and took reference ties.

July 16, 1990. We found the cast iron monument in good condition and checked the reference ties.

NORTHEAST corner, Section 34, Township 116 North, Range 29 West

Certificate of Location of Government Corner

SKETCH OF REFERENCE TIES
(NO SCALE)Statement of evidence relative to this corner location on sheet 2

I hereby certify that this document
was prepared by me or under my
direct supervision.

Willard Pellinen

Willard Pellinen
McLeod County Surveyor
License No. 9626

Date Oct. 13, 1991

OFFICE OF THE COUNTY RECORDER
MCLEOD COUNTY, MINNESOTA.

I hereby certify that this document was filed in this
office at 1 o'clock P.M. on the 21st day
of Oct, 1991.

Carmen Ostlie, County Recorder

By _____, Deputy

Document No. 241613

NORTHEAST corner, Section 34, Township 116 North, Range 29 West

Certificate of Location of Government Corner

This corner was originally set by the General Land Office in 1855. A. H. Runyon "drove charred stake, raised mound with trench as per instructions." He also planted apple seeds at the southeast side of the mound.

August, 1969. McCombs Knutson Associates (Dickman Knutson, county surveyor) found an iron pipe down 2 feet below the surface of the road. Mr. John Boushka and Mr. Charles Johnson, long time residents of the area, both said this is the correct corner. Section 35 was surveyed about 35 years ago and all the corners were set or found at that time. Knutson set a McLeod County cast iron monument.

July 16, 1990. We found no reference ties remaining to the corner. We found the cast iron monument down 6 inches below the surface and took new available ties.

The cast iron monument is accepted as the the correct location of the section corner.

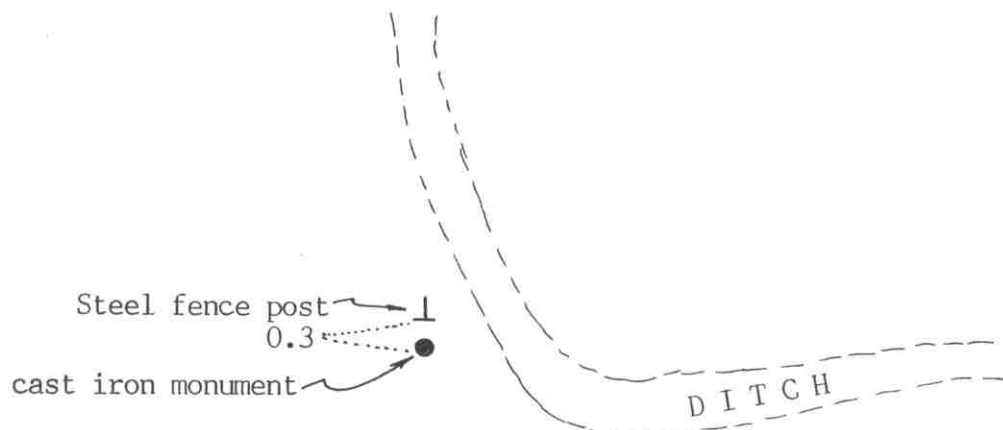
NORTH QUARTER corner, Section 34, Township 116 North, Range 29 West

Certificate of Location of Government Corner

SKETCH OF REFERENCE TIES

(NO SCALE)

SECTION 27



2665.15 feet to northwest corner of Section 34

2665.26 feet to northeast corner of Section 34

Angle at quarter corner on north side of line= $179^{\circ}20'54''$

Corner is 15.16 feet south of straight line between section corners

SECTION 34

Statement of evidence relative to this corner location on sheet 2

I hereby certify that this document
was prepared by me or under my
direct supervision.

Willard Pellinen

Willard Pellinen
McLeod County Surveyor
License No. 9626

Date October 15, 1991

OFFICE OF THE COUNTY RECORDER
MCLEOD COUNTY, MINNESOTA.

I hereby certify that this document was filed in this
office at 1 o'clock P. M. on the 21st day
of Oct, 19 91.

Carmen Ostlie County Recorder

By _____, Deputy

Document No. 241615

NORTH QUARTER corner, Section 34, Township 116 North, Range 29 West

Certificate of Location of Government Corner

1855. A. H. Runyon of the General Land Office "set quarter section post, drove charred stake, raised mound with trench as per instructions." He also planted apple seeds at the southeast side of the mound.

August 29, 1977. Mr. Alan Plath, 34 years old and has lived in the Southwest Quarter of Section 26 all his life. Farm in the family since his grandfather had it. He owns North Half of North Half of Section 34. He said ditch farther east is on the section line, was built a little south of line near the quarter corner because of trees on the north.

April 29, 1981. We set a cast iron monument in place of a found wood fence post. This is on the westerly extension of the center line of the ditch from farther east and on line with some old barb wire near the corner.

July 23, 1990. We found an iron pipe which we set over the cast iron monument in 1981 and steel fence post on the north side of the monument.

We accept this location as the quarter corner. It fits an occupation line, the westerly extension of the center line of the ditch, and it falls very nearly on a split between the section corners.

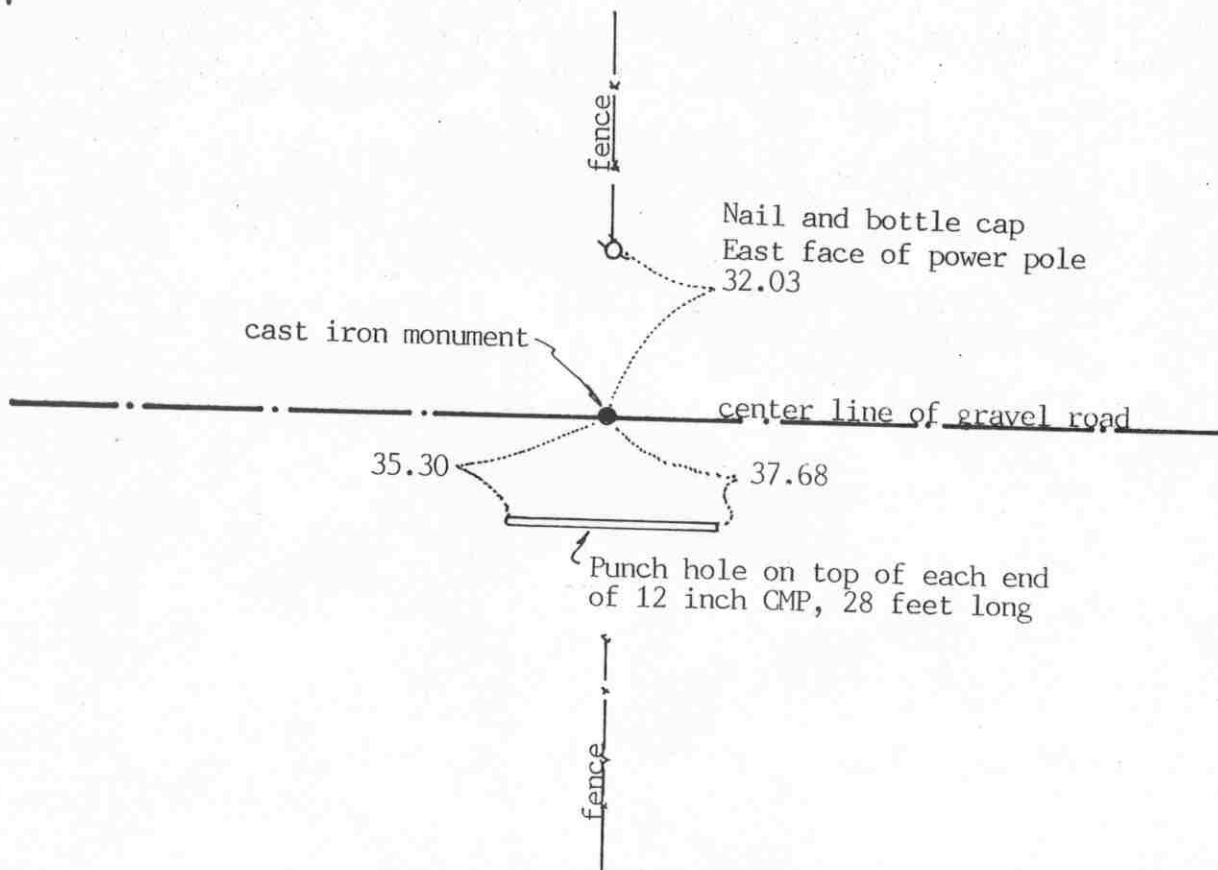
Certificate of Location of Government Corner



SKETCH OF REFERENCE TIES

(NO SCALE)

SECTION 3 4



SECTION 3

Statement of evidence relative to this corner location on sheet 2

I hereby certify that this document was prepared by me or under my direct supervision.

Willard Pellinen

Willard Pellinen
McLeod County Surveyor
License No. 9626

Date October 13, 1991

OFFICE OF THE COUNTY RECORDER
MCLEOD COUNTY, MINNESOTA.

I hereby certify that this document was filed in this office at 1 o'clock P.M. on the 21st day of Oct, 1991.

Armen D. Stille, County Recorder

By _____, Deputy

Document No. 241591

NORTH QUARTER corner, Section 3, Township 115 North, Range 29 West

Certificate of Location of Government Corner

1855. John Ryan of the General Land Office set a post, deposited charcoal, dug pits and trench, built mound and planted osage orange seeds at the corners of the mound.

1954. County Highway Department field notes show the corner to be in line with a fence running north.

George Kreitlow who lives in the Northeast Quarter of Section 3 and Matt Pohlmeier, in the Southeast Quarter of Section 34 both said the corner is the center line of the east-west road on the extensions of the fences from the north and south.

September 8, 1969. McCombs Knutson Associates (Dickman Knutson, county surveyor) set a temporary corner in the center line of the road in line with the fences.

Knutson excavated for the corner but found nothing. He set a McLeod County cast iron monument on the intersection of the fences and the center line of the road and took reference ties.

July 16, 1990. We found no reference ties remaining. We dug and found the cast iron monument in good condition down 6 inches below the road surface and took new ties.

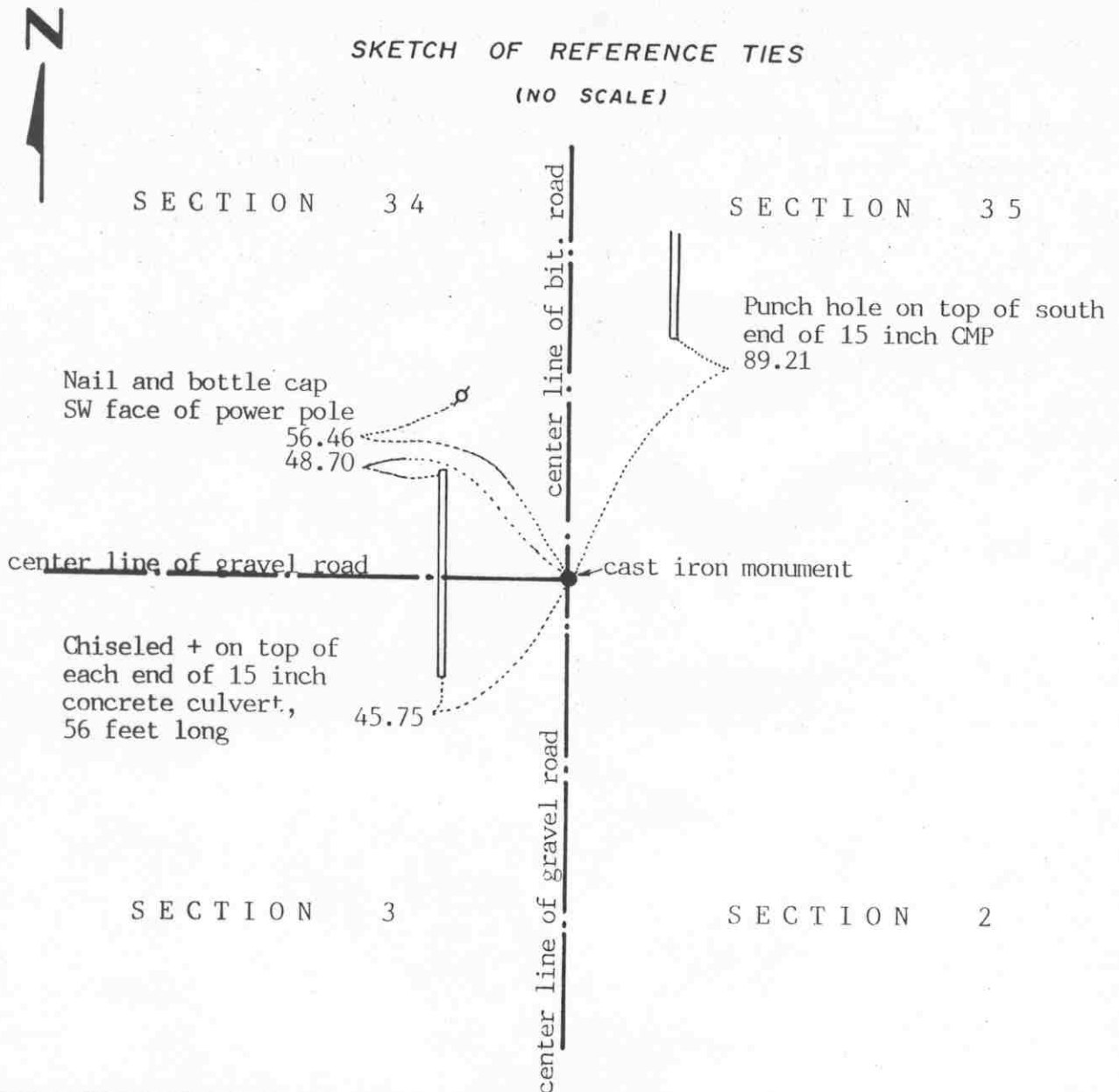
There being no evidence to the contrary, we accept the monument set by Knutson as marking the correct location of the quarter corner. It fits long standing occupation lines, the center line of the road and the fence lines, and has been accepted as the corner by the adjoining land owners.

NORTHEAST corner, Section 3, Township 115 North, Range 29 West

Certificate of Location of Government Corner

SKETCH OF REFERENCE TIES

(NO SCALE)



Statement of evidence relative to this corner location on sheet 2

I hereby certify that this document was prepared by me or under my direct supervision.

Willard Pellinen

Willard Pellinen
McLeod County Surveyor
License No. 9626

Date October 9, 1991

OFFICE OF THE COUNTY RECORDER
MCLEOD COUNTY, MINNESOTA.

I hereby certify that this document was filed in this office at 1 o'clock P.M. on the 21st day of Oct, 1991.

Carmen Potlie, County Recorder

By _____, Deputy

Document No. 241590

NORTHEAST corner, Section 3, Township 115 North, Range 29 West

Certificate of Location of Government Corner

1855. John Ryan of the General Land Office set a post, deposited charcoal, dug pits and trench, built mound and planted osage seeds at the corners of the mound.

August 13, 1969. McCombs Knutson Associates (Dickman Knutson, county surveyor) dug for the corner and found a re-rod down $1\frac{1}{2}$ feet below the surface of the road. This was on the center line intersection of roads north, south and west. Mr. John Bouska, in the west half of Section 36 and Mr. Charles Johnson, in the Southeast Quarter of Section 35, both say this is the correct corner. They said Section 35 was surveyed about 35 years ago and all the corners were found or set and were on the center lines of the roads, or at fence intersections. Knutson set a McLeod County cast iron monument and took reference ties.

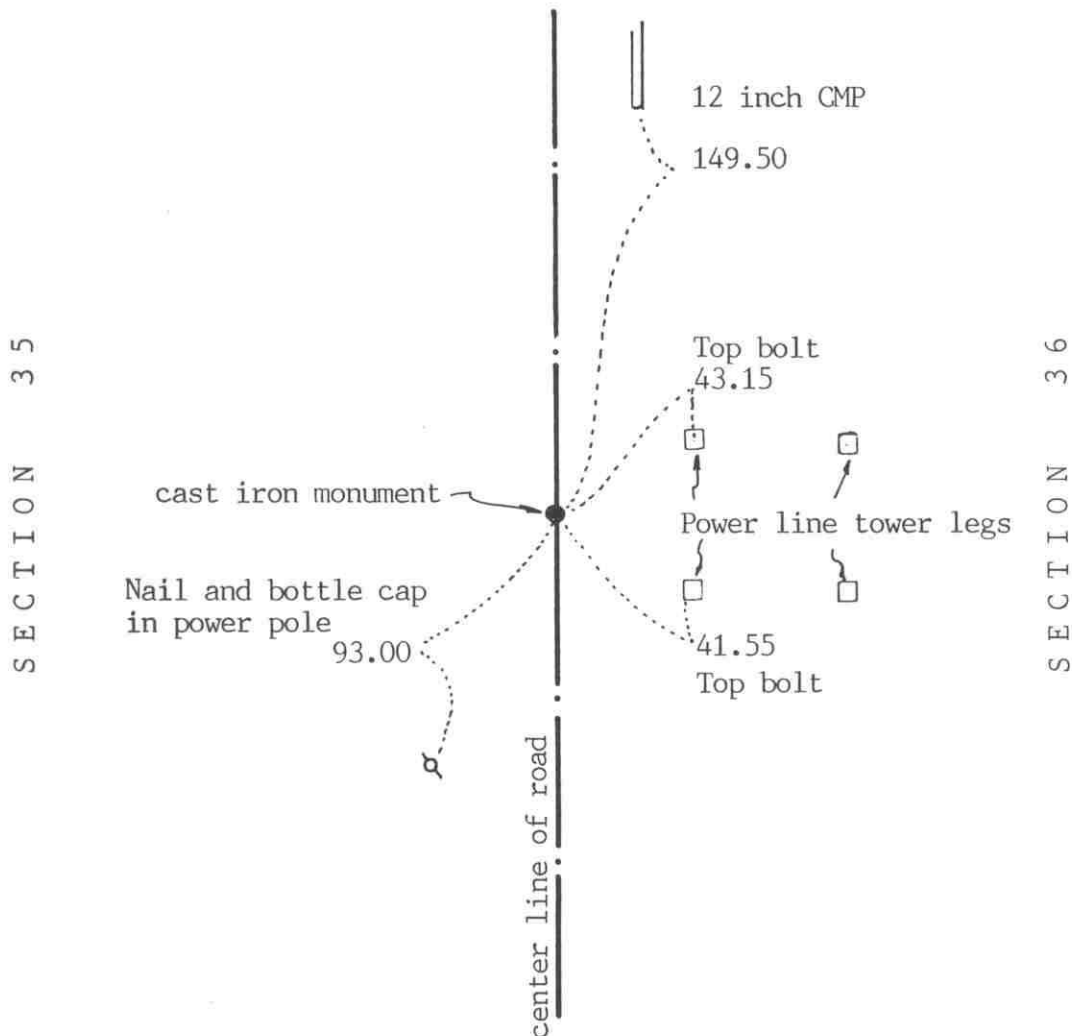
July 16, 1990. We found the monument in good condition and took new reference ties.

We believe the re-rod found by Knutson had perpetuated the correct location of the section corner.

EAST QUARTER corner, Section 35, Township 116 North, Range 29 West

Certificate of Location of Government Corner

SKETCH OF REFERENCE TIES (NO SCALE)



Statement of evidence relative to this corner location on sheet 2

I hereby certify that this document was prepared by me or under my direct supervision.

Willard Pellinen

Willard Pellinen
McLeod County Surveyor
License No. 9626

Date Oct. 12, 1991

OFFICE OF THE COUNTY RECORDER
MCLEOD COUNTY, MINNESOTA.

I hereby certify that this document was filed in this office at 1 o'clock P. M. on the 21st day of Oct, 19 91.

Armen Ostlie, County Recorder

By _____, Deputy

Document No. 241617

EAST QUARTER corner, Section 35, Township 116 North, Range 29 West

Certificate of Location of Government Corner

1855. A.H.Runyon of the General Land Office "set quarter section post, drove charred stake, built mound with trench as per instructions." He planted apple seeds at the south-east corner of the mound.

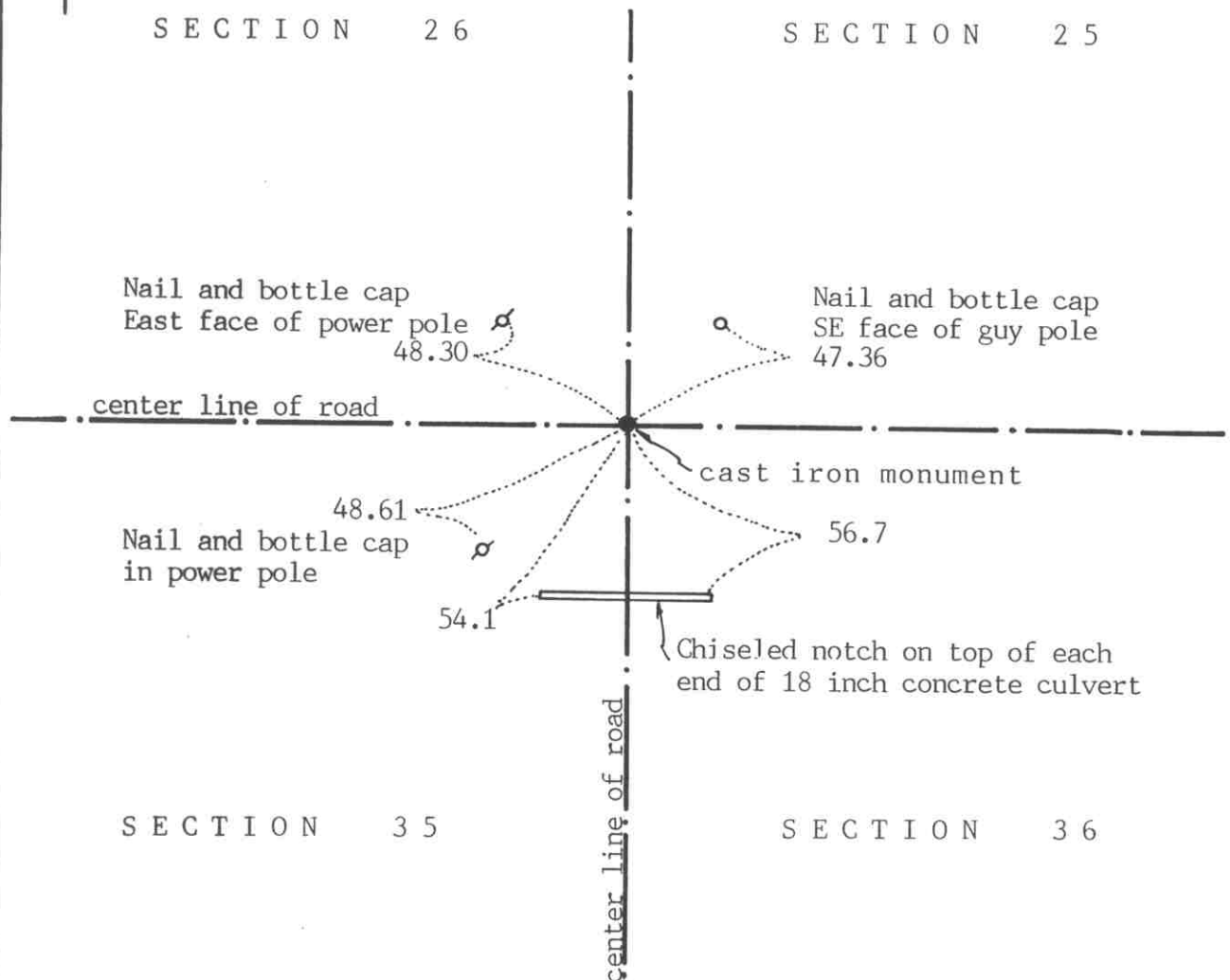
August, 1969. McCombs Knutson Associates (Dickman Knutson, county surveyor) set a cast iron monument on the center line of the north-south road in line with a fence to the west. Mr. John Boushka and Mr. Charles Johnson, longtime area residents, both stated this was the correct location. Section 35 was surveyed about 35 years ago and all the corners were found or set and the fence to the west was set on line.

July 16, 1990. We found the cast iron monument in good condition and checked the reference ties.

NORTHEAST corner, Section 35, Township 116 North, Range 29 West

Certificate of Location of Government Corner

SKETCH OF REFERENCE TIES
(NO SCALE)



Statement of evidence relative to this corner location on sheet 2

I hereby certify that this document
was prepared by me or under my
direct supervision.

Willard Pellinen

Willard Pellinen
McLeod County Surveyor
License No. 9626

Date Oct. 14, 1991

OFFICE OF THE COUNTY RECORDER
MCLEOD COUNTY, MINNESOTA.

I hereby certify that this document was filed in this
office at 1 o'clock P.M. on the 21st day
of Oct, 1991.

Armen Ostlie, County Recorder

By _____, Deputy

Document No. 241616

NORTHEAST corner, Section 35, Township 116 North, Range 29 West

Certificate of Location of Government Corner

1855. A. H. Runyon of the General Land Office "drove charred stake, raised mound with trench as per instructions." He also planted apple seeds at the southeast side of the mound.

August, 1969. McCombs Knutson Associates (Dickman Knutson, county surveyor) dug for the corner. They found a re-rod down 2 feet below the surface of the road. Mr. John Boushka and Mr. Charles Johnson, long time area residents, both agreed this was the quarter corner. They said Section 35 was surveyed about 35 years ago and all the government corners were either found or set at that time. This re-rod was at the intersection of the east-west and north-south roads.

May 7, 1979. We found the monument in good condition and checked the reference ties.

July 16, 1990. We again found the monument and the reference ties good.

We accept the cast iron monument set by Knutson as the corner location. It fits long standing occupation lines, the center lines of the roads and the testimony of 2 area residents.

NORTH QUARTER corner, Section 35, Township 116 North, Range 29 West

Certificate of Location of Government Corner

SKETCH OF REFERENCE TIES

(NO SCALE)

SECTION 26

Nail and bottle cap
S'ly face of power pole
23.90

Nail and bottle cap
South face of power pole
172.95

cast iron monument

center line of gravel road

Nail and bottle cap
West face of power pole
150.00

SECTION 35

Statement of evidence relative to this corner location on sheet 2

I hereby certify that this document
was prepared by me or under my
direct supervision.

Willard Pellinen

Willard Pellinen
McLeod County Surveyor
License No. 9626

Date October 12, 1991

OFFICE OF THE COUNTY RECORDER
MCLEOD COUNTY, MINNESOTA.

I hereby certify that this document was filed in this
office at 1 o'clock P. M. on the 24th day
of Oct, 1991.

Armen Ostlie, County Recorder

By _____, Deputy

Document No. 241618

NORTH QUARTER corner, Section 35, Township 116 North, Range 29 West

Certificate of Location of Government Corner

1855. A. H. Runyon of the General Land Office "set quarter section post, drove charred stake, raised mound with trench as per instructions." He planted apple seeds at the south-east side of the mound.

August, 1969. McCombs Knutson Associates (Dickman Knutson, county surveyor) found an iron pipe down 1 foot below the surface. This was on the center line P.I. of a gravel road in line with a fence to the north. Mr. John Boushka and Mr. Charles Johnson, longtime residents of the area, both stated this was the quarter corner. Section 35 was surveyed about 35 years ago and all the corners were found or set. Knutson set a McLeod County cast iron monument and took reference ties.

July 16, 1990. We found the cast iron monument and checked the reference ties.

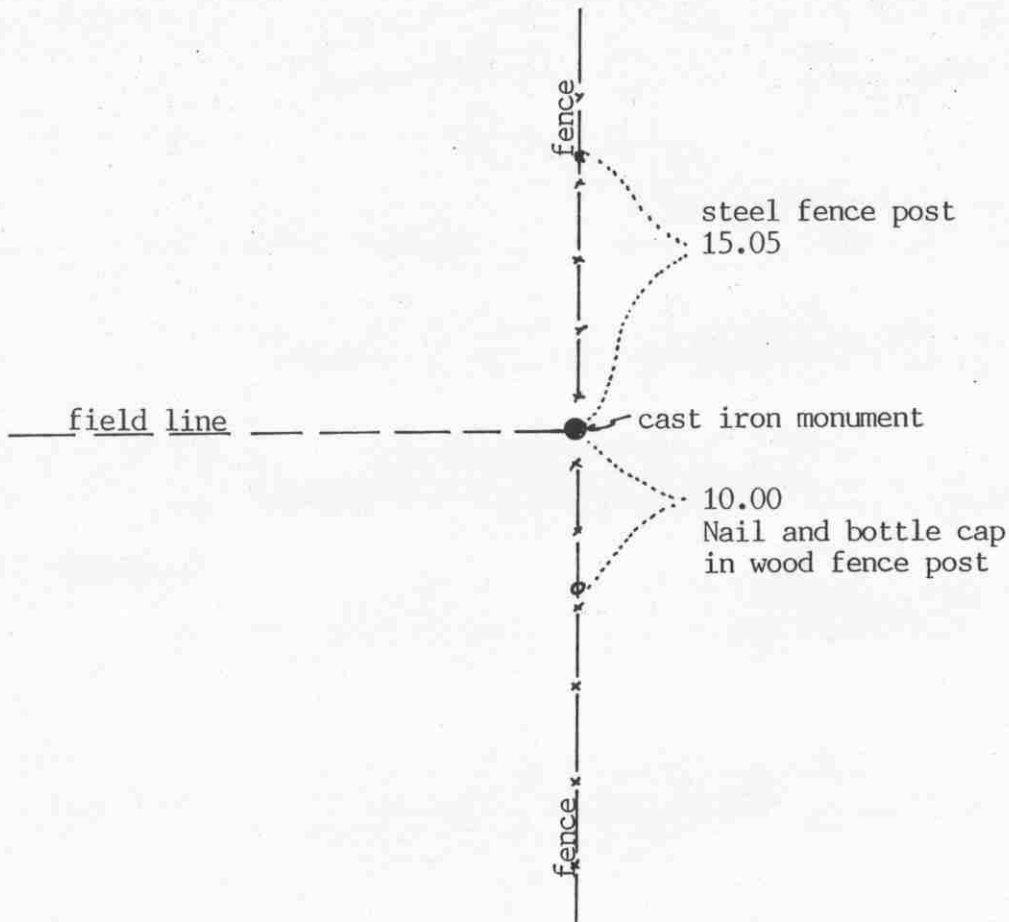
NORTH QUARTER corner, Section 2, Township 115 North, Range 29 West

Certificate of Location of Government Corner

SKETCH OF REFERENCE TIES

(NO SCALE)

SECTION 35 T.116 R.29



SECTION 2 T.115 R.29

Statement of evidence relative to this corner location on sheet 2

I hereby certify that this document was prepared by me or under my direct supervision.

Willard Pellinen

Willard Pellinen
McLeod County Surveyor
License No. 9626

Date Feb. 23, 1993

OFFICE OF THE COUNTY RECORDER
MCLEOD COUNTY, MINNESOTA.

I hereby certify that this document was filed in this office at 9 o'clock A.M. on the 4th day of March, 1993.

Carmen Stille Mader, County Recorder

By _____, Deputy

Document No. 250782

NORTH QUARTER corner, Section 2, Township 115 North, Range 29 West

Certificate of Location of Government Corner

July, 1855. This corner was originally established by John Ryan of the General Land Office. He set a post, deposited charcoal, dug pits and trench, built mound and planted osage orange seeds at the corners of the mound.

August, 1969. Mr. Charles Johnson, who lives in the Southeast Quarter of Section 35 and Mr. John Boushka, who lives in Section 36, both testified the fence intersection is the quarter corner. Mr. Boushka said Section 35 was surveyed about 35 years ago and all the center lines of the roads and the fences at the quarter corners and Section corners were good. Dickman Knutson, county surveyor, set a McLeod County cast iron monument at the fence intersection and took available reference ties. The fences ran north, south, east and west from the corner. The corner is about 13 feet east of a split between the section corners.

The monument set by Knutson is accepted as marking the quarter corner. It fits long standing occupation lines, the fences, which had been accepted by adjoining land owners as being on the section and quarter lines.

February 10, 1993. We found the monument in good condition and checked the reference ties.

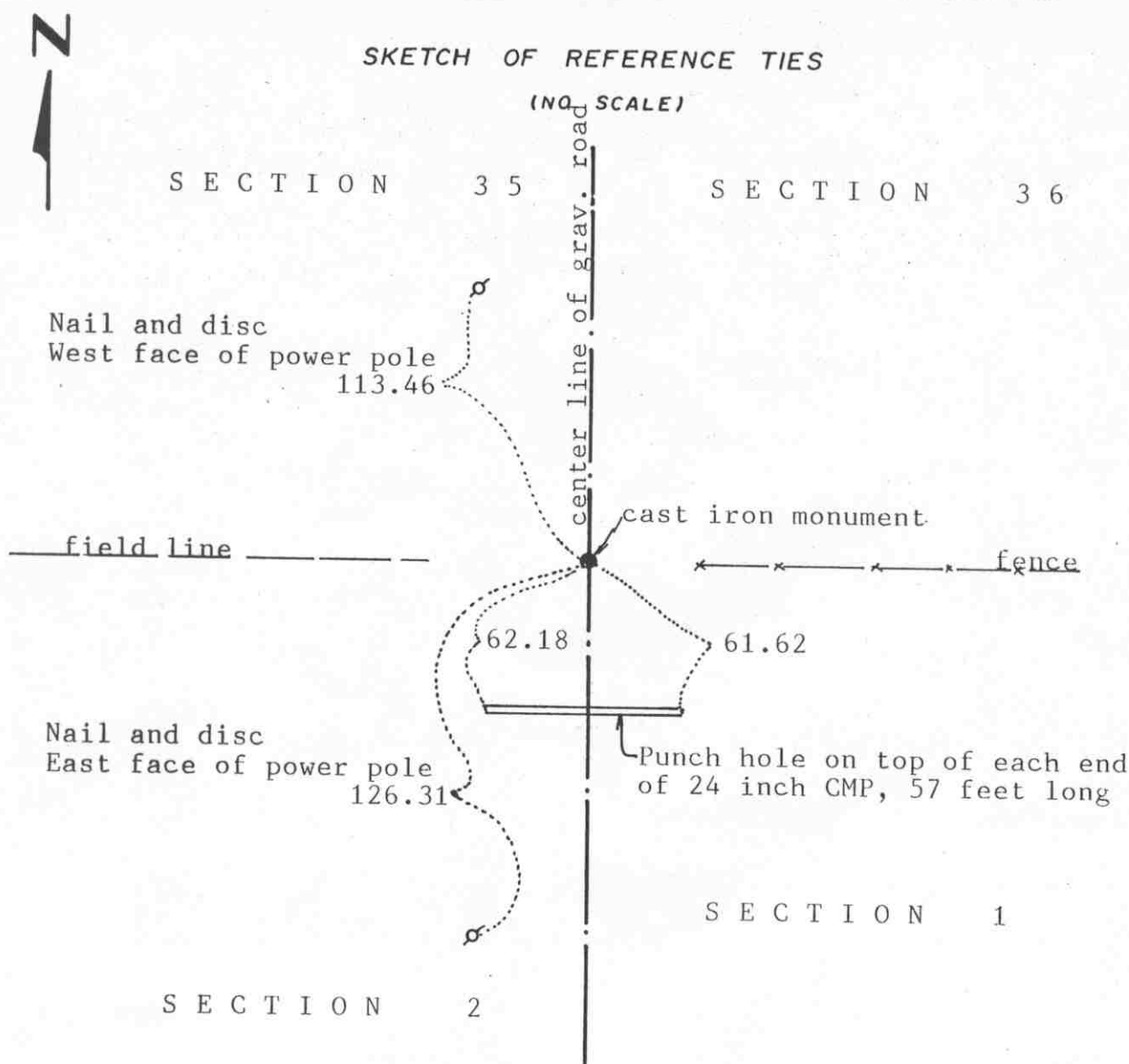
NORTHEAST

Sheet 1 of 2 sheetscorner, Section 2, Township 115 North, Range 29 West

Certificate of Location of Government Corner

SKETCH OF REFERENCE TIES

(NO SCALE)

Statement of evidence relative to this corner location on sheet 2

I hereby certify that this document
was prepared by me or under my
direct supervision.

Willard Pellinen

Willard Pellinen
McLeod County Surveyor
License No. 9626

Date Oct. 8, 1991

OFFICE OF THE COUNTY RECORDER
MCLEOD COUNTY, MINNESOTA.

I hereby certify that this document was filed in this
office at 1 o'clock P.M. on the 21st day
of Oct, 1991.

Armen Ottilie, County Recorder

By _____, Deputy

Document No. 241589

NORTHEAST corner, Section 2, Township 115 North, Range 29 West

Certificate of Location of Government Corner

1855. John Ryan of the General Land Office set a post, deposited charcoal, dug pits and trench, built mound and planted osage orange seeds at the corners of the mound.

August 13, 1969. McCombs Knutson Associates (Dickman Knutson, county surveyor) found a re-rod in the center line of the road, fences east and west. Re-rod was down $1\frac{1}{2}$ feet below the surface of the road. Mr. John Bouska, in the west half of Section 36 and Mr. Charles Johnson, in the Southeast Quarter of Section 35, said this is the correct corner. Section 35 was surveyed about 35 years ago and all corners were on the center lines and all the fences were good at the section corners and $\frac{1}{4}$ corners. Knutson set a McLeod County cast iron monument and took reference ties.

July 16, 1990. We found the monument in good condition down 8 inches below the road surface and took new reference ties.

We believe the re-rod found by Knutson had perpetuated the correct location of the section corner.

EAST QUARTER corner, Section 36, Township 116 North, Range 29 West

Certificate of Location of Government Corner

SKETCH OF REFERENCE TIES

(NO SCALE)



SECTION 36

Nail and bottle cap
SW face of post by
telephone pedestal

59.07

cast iron monument

Nail and bottle cap
NW face of power pole
50.22

34.42

Punch hole on top of each end
of 24 inch CMP, 70 feet long
center line of gravel drive

84.20

center line of bituminous road

SECTION 31

Statement of evidence relative to this corner location on sheet 2

I hereby certify that this document
was prepared by me or under my
direct supervision.

Willard Pellinen

Willard Pellinen
McLeod County Surveyor
License No. 9626

Date Oct. 8, 1991

OFFICE OF THE COUNTY RECORDER
MCLEOD COUNTY, MINNESOTA.

I hereby certify that this document was filed in this
office at 1 o'clock P.M. on the 21st day
of Oct, 1991.

Carmen Botlie County Recorder

By _____, Deputy

Document No. 241620

EAST QUARTER corner, Section 36, Township 116 North, Range 29 West

Certificate of Location of Government Corner

July, 1855. John Ryan of the General Land Office set a post, deposited charcoal, dug pits and trench, built mound and planted osage orange seeds at the corners of the mound.

December 23, 1899. Field notes by E.L. Higgins, county surveyor, show an iron pin at the corner.

19???. Old field notes of County Highway Department show an iron pipe at the corner. They show a distance of 2622.50 feet to the northeast corner of Section 36.

October 2, 1970. McCombs Knutson Associates (Dickman Knutson, county surveyor) excavated for the corner, John Tupa from Hutchinson with a backhoe. Down 3 feet below the road surface they found a stone and a wood stake below the stone.

Knutson set a McLeod County cast iron monument at the corner.

February 26, 1981. We measured the east line of Section 36 and had a distance of 2622.94 feet to the northeast corner compared with the distance of 2622.50 by County Hwy Department.

July 16, 1990. We checked the reference ties to the corner.

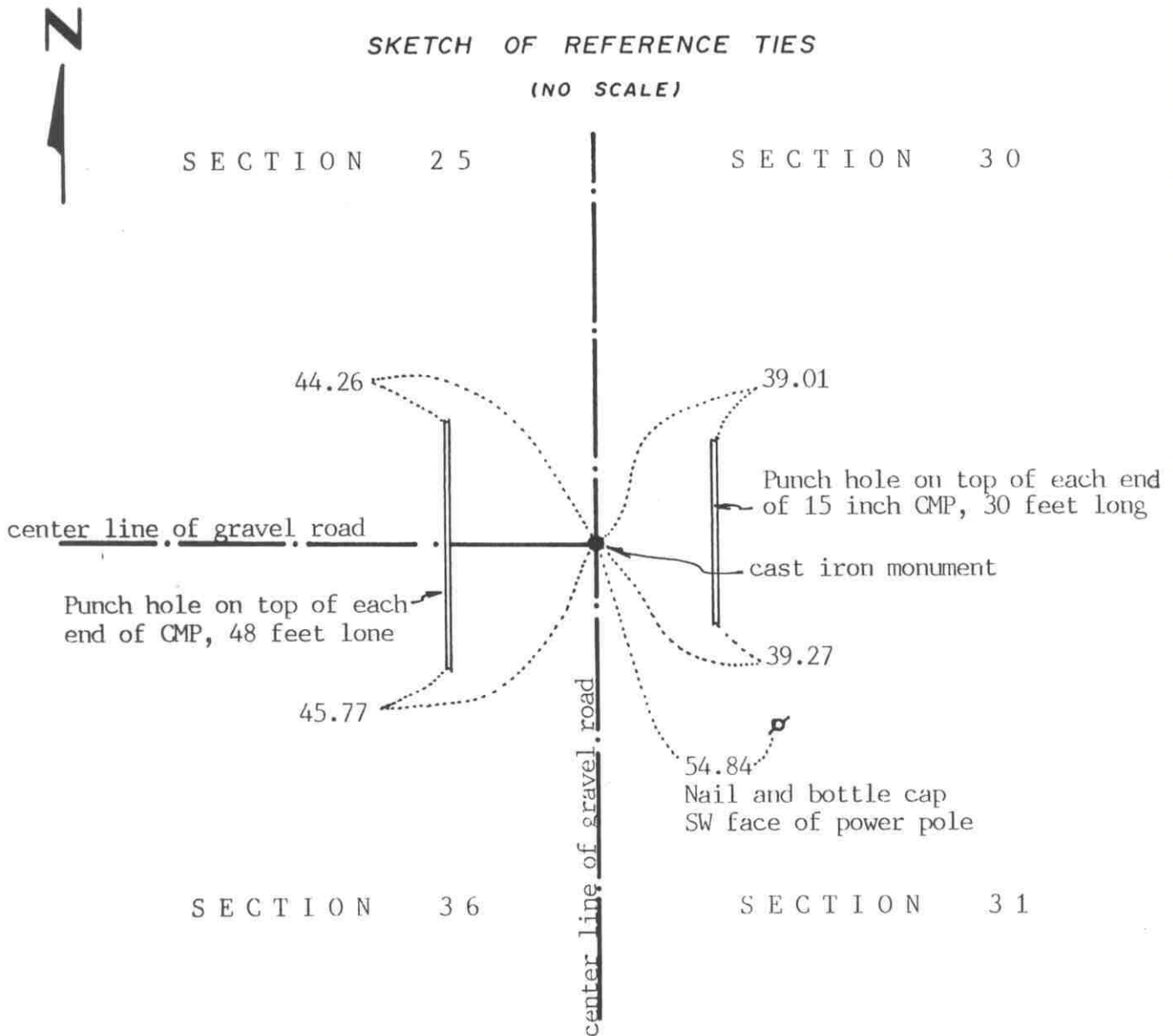
The cast iron monument is accepted as the correct location of the quarter corner. It fits occupation lines, the center line of the road and it perpetuates the location of the old monuments, the stone and wood stake.

NORTHEAST corner, Section 36, Township 116 North, Range 29 West

Certificate of Location of Government Corner

SKETCH OF REFERENCE TIES

(NO SCALE)



Statement of evidence relative to this corner location on sheet 2

I hereby certify that this document was prepared by me or under my direct supervision.

Willard Pellinen

Willard Pellinen
McLeod County Surveyor
License No. 9626

Date Oct. 8, 1991

OFFICE OF THE COUNTY RECORDER
MCLEOD COUNTY, MINNESOTA.

I hereby certify that this document was filed in this office at 1 o'clock P.M. on the 21st day of Oct, 1991.

Armen Ostlie, County Recorder

By _____, Deputy

Document No. 241619

NORTHEAST

corner, Section 36, Township 116 North, Range 29 West

Certificate of Location of Government Corner

July, 1855. This corner was established by John Ryan. He set a post and marked 3 aspens for bearing trees.

1901. E.L Higgins, surveyor, measured 2635.6 feet to the east quarter corner of Section 25 and 2770.8 feet to the north quarter corner of Section 31.

19???. Old county highway department field notes show a stone at the corner and a distance of 2622.50 feet to the east quarter corner of Section 36 and a distance of 2636 feet to the east quarter corner of Section 25.

April 16, 1970. McCombs Knutson Associated (Dickman Knutson, county surveyor) excavated for the corner, John Tupa from Hutchinson with a backhoe. The dug a hole 3 feet by 8 feet by 3 feet deep. Down at 3 feet they found a 1 inch diameter iron pin. They took reference ties and left the iron pin in place. Knutson set a cast iron monument at the corner.

November, 1983. We measured 2636.18 feet to the east quarter corner of Section 25 compared with 2636 by the highway department and 2769.32 feet to the north quarter corner of Section 31 compared with the old distance of 2770.8 by Higgins in 1901.

July 16, 1990. We found the cast iron monument in good condition 8 inches below the road surface and took new reference ties.

The monument is accepted as the location of the corner because it perpetuates the position of the old iron pin, it fits the occupation lines, the center lines of the road and it agrees very nearly with the old survey distances.

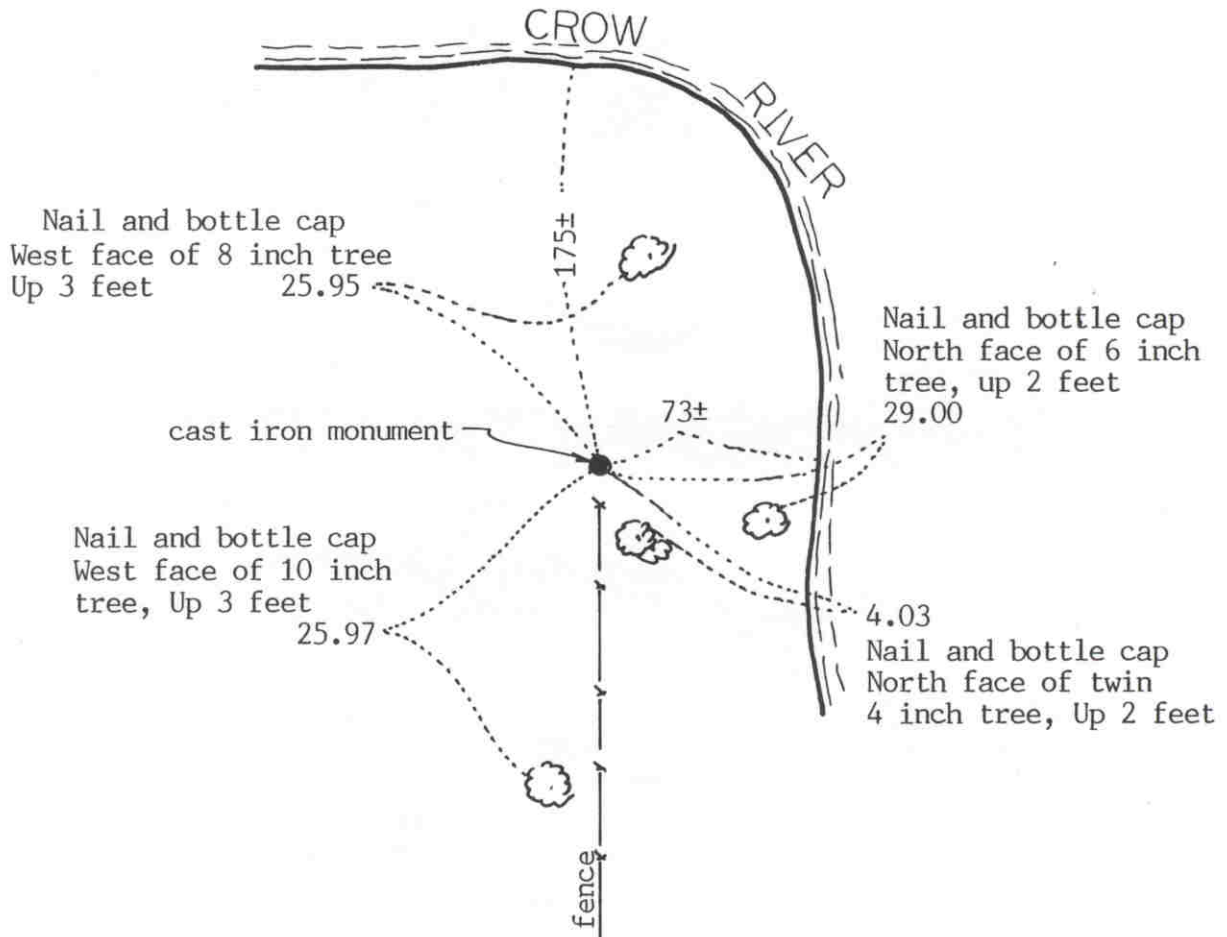
NORTH QUARTER corner, Section 36, Township 116 North, Range 29 West

Certificate of Location of Government Corner

SKETCH OF REFERENCE TIES

(NO SCALE)

SECTION 25



SECTION 36

Statement of evidence relative to this corner location on sheet 2

I hereby certify that this document was prepared by me or under my direct supervision.

Willard Pellinen

Willard Pellinen
McLeod County Surveyor
License No. 9626

Date February 23, 1993

OFFICE OF THE COUNTY RECORDER
MCLEOD COUNTY, MINNESOTA.

I hereby certify that this document was filed in this office at 9 o'clock A.M. on the 4th day of March, 19 93.

Carman Otis Mulder, County Recorder

By _____, Deputy

Document No. 250786

NORTH QUARTER corner, Section 36, Township 116 North, Range 29 West*Certificate of Location of Government Corner*

August, 1855. This corner was originally established by the General Land Office. A.H.Runyon set a post, drove a charred stake, raised mound with trench as per instructions and planted apple seeds southeast of the mound.

December 23, 1899. Survey notes by E. L. Higgins, county surveyor, show a distance of 2721.5 feet to the northeast corner of Section 36. (calculated distance)

January 31, 1979. We measured the north line of Section 36 and found a 3/4 inch iron pipe at the fence intersection, fences south and east. Emma Kaufman, 70 years old, had lived in the Northeast Quarter of Section 36 since 1944, and William Dahlke, 41 years old, and had lived in the Southeast Quarter of Section 25 since 1941, both testified that this was the quarter corner.

July 6, 1979. We replaced the iron pipe with a McLeod County cast iron monument and took available reference ties.

This corner is about 33 feet west of a split between the section corners and about 16 feet south of a straight line between the section corners.

We accept the found iron pipe as having perpetuated the location of the quarter corner.

February 8, 1993. We found the monument in good condition. All old ties destroyed so we took new reference ties.

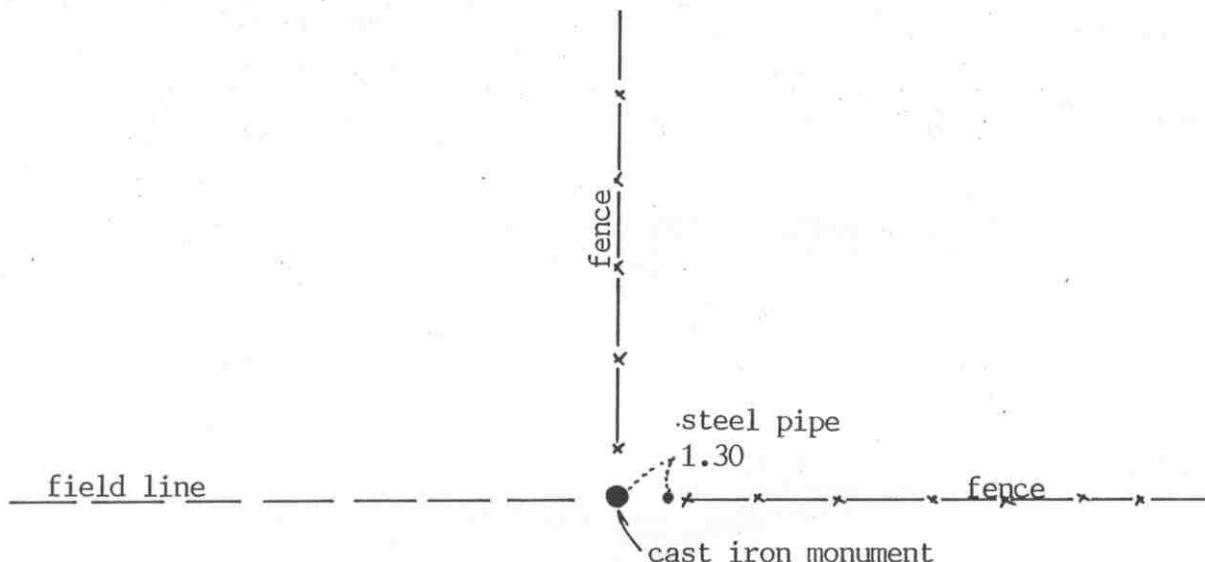
NORTH QUARTER corner, Section 1, Township 115 North, Range 29 West

Certificate of Location of Government Corner

SKETCH OF REFERENCE TIES

(NO SCALE)

SECTION 36 T. 116 R. 29



SECTION 1, T. 115 R. 29

Statement of evidence relative to this corner location on sheet 2

I hereby certify that this document was prepared by me or under my direct supervision.

Willard Pellinen

Willard Pellinen
McLeod County Surveyor
License No. 9626

Date Feb. 23, 1993

OFFICE OF THE COUNTY RECORDER
MCLEOD COUNTY, MINNESOTA.

I hereby certify that this document was filed in this office at 9 o'clock A.M. on the 9th day of March, 19 93.

Armenia St. Lie N. Quader County Recorder

By _____, Deputy

Document No. 250780

NORTH QUARTER corner, Section 1, Township 115 North, Range 29 West

Certificate of Location of Government Corner

July, 1855. This corner was originally established by John Ryan of the General Land Office. He set a post, deposited charcoal, dug pits and trench, built mound and planted osage orange seeds at the corners of the mound.

September 10, 1969. McCombs Knutson Associates (Dickman Knutson, county surveyor) found a stone at the fence intersection. Fences north, east and west. Mr. Oliver Brecht, who had lived in the Southwest Quarter of Section 36 for 32 years, testified this was the correct location of the quarter corner. Knutson replaced the stone with a McLeod County cast iron monument and took available reference ties.

The monument is accepted as marking the quarter corner. It fits long standing occupation lines, the fences and has been accepted by adjoining land owners as the quarter corner.

February 10, 1993. We found the monument in good condition and checked the ties.

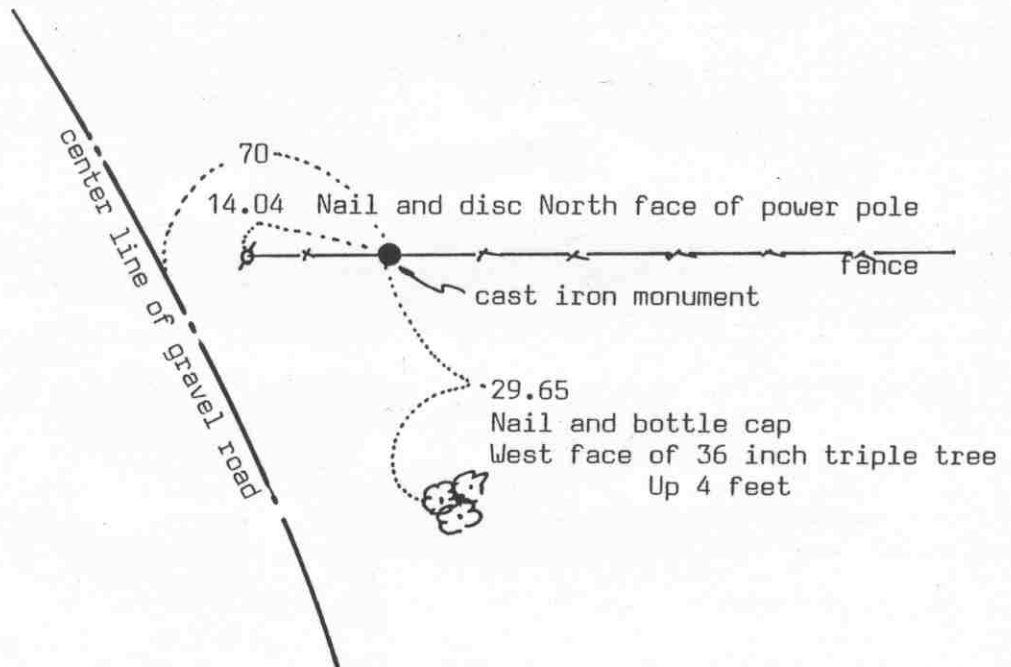
NORTHEAST corner, Section 1, Township 115 North, Range 29 West

Certificate of Location of Government Corner

SKETCH OF REFERENCE TIES (NO SCALE)

SECTION 36
T. 116 R. 29

SECTION 31
T. 116 R. 28



SECTION 1
T. 115 R. 29

SECTION 6
T. 115 R. 28

Statement of evidence relative to this corner location on sheet 2

I hereby certify that this document was prepared by me or under my direct supervision.

Willard Pellinen

Willard Pellinen
McLeod County Surveyor
License No. 9626

Date March 19, 1993

OFFICE OF THE COUNTY RECORDER
MCLEOD COUNTY, MINNESOTA.

I hereby certify that this document was filed in this office at 4 o'clock P. M. on the 27th day of July, 1993.

Carmen Ostlie Mulder, County Recorder

By _____, Deputy

Document No. 253813

NORTHEAST corner, Section 1, Township 115 North, Range 29 West*Certificate of Location of Government Corner*

1855. This corner was originally established by John Ryan of the General Land Office. He set a post and marked an oak for a bearing tree.

September, 1969. Clarence Ondrachek, in the Northeast Quarter of Section 1, said there is an iron at the corner, near an iron post. Dickman Knutson, county surveyor, found iron rod beside an iron post and replaced it with a McLeod County cast iron monument. He took available reference ties.

February 5, 1993. We found no ties remaining. We found the monument in good condition along the east-west fence, and took new reference ties.

The monument set by Knutson is accepted as marking the correct location of the section corner. It fits long standing occupation lines and it replaces an older monument which had been accepted by adjoining land owners as the section corner.